

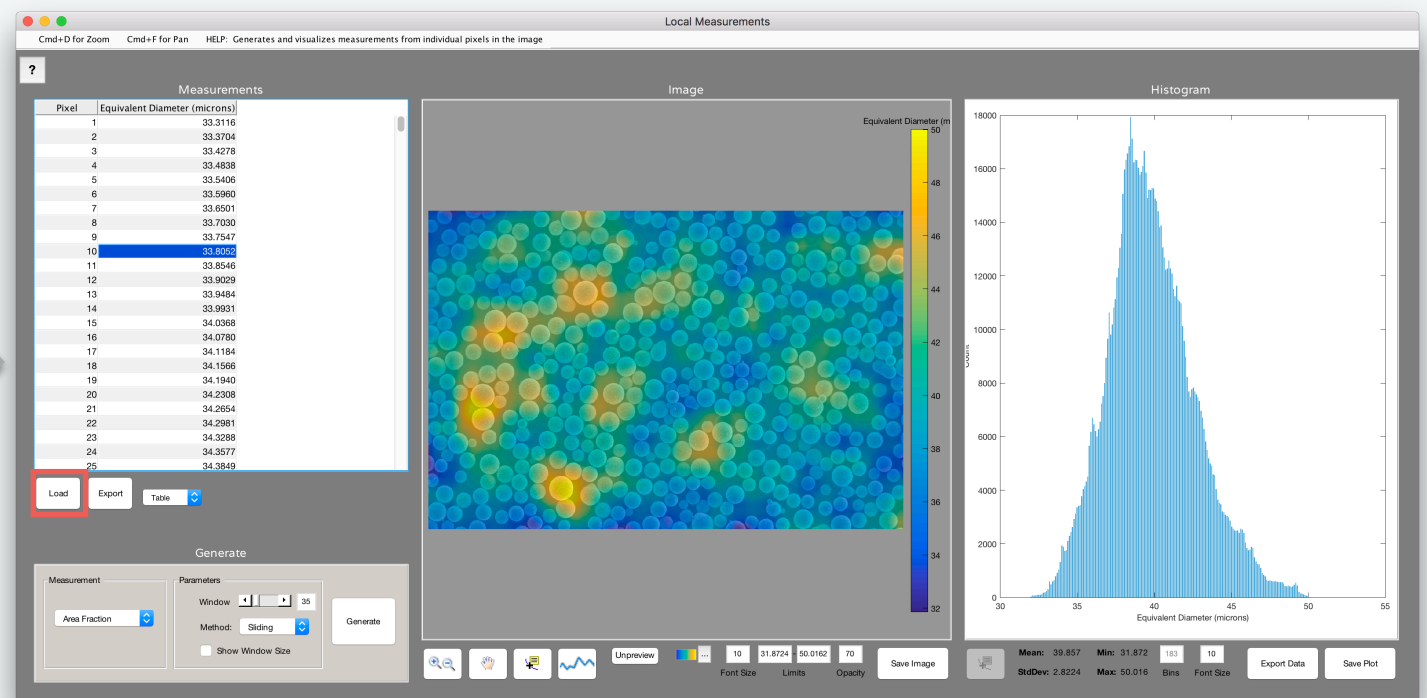
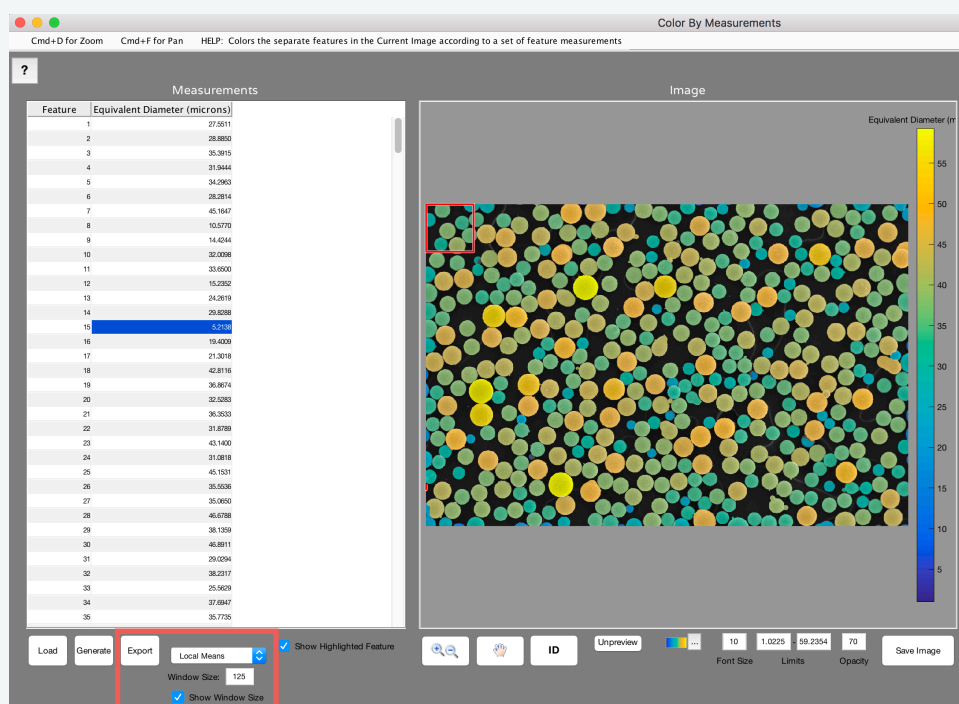


MIPAR™

Release Notes

v1.1.1

Map Feature Measurements



MIPAR's Color By Measure tool now allows you to export sliding window local measurements from your feature measurements.

Anything you can measure per feature, you can now map per pixel!

Bugs Fixed

- Fixed bug with printing all intercepts during *Measurements > Intercepts*
- Fixed bug that occurred occasionally when removing multiple measurements from a Recipe
- Fixed bug that occurred occasionally when updating a Recipe with a Reject Features step
- Fixed bug associated with editing an optimized step that used a sub-region

Other Changes

- “Show Window Size” toggles faster in Local Measurements and Color By Measurements
- Dedicated message box no longer displays when optimizing a step using a sub-region