

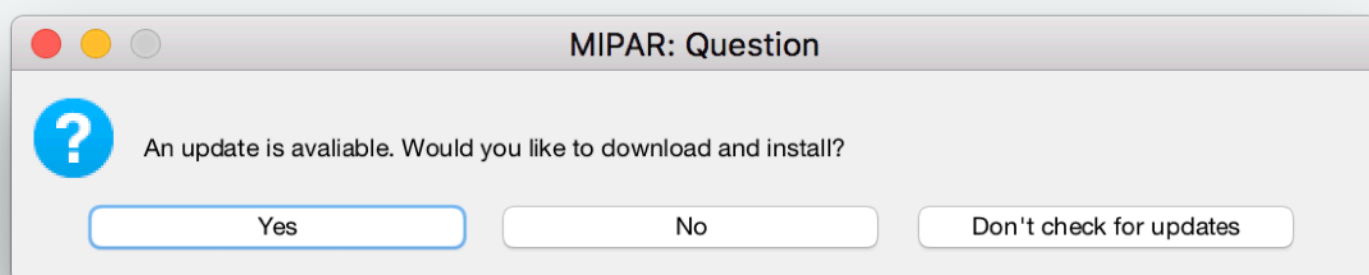


MIPAR™

Release Notes

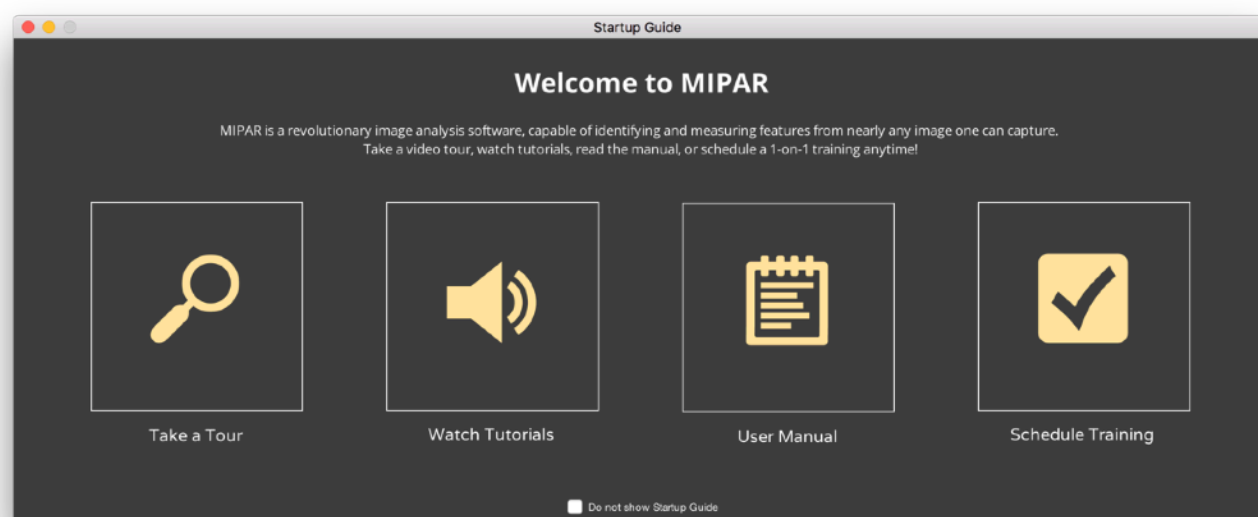
v1.3.0

Auto Updates



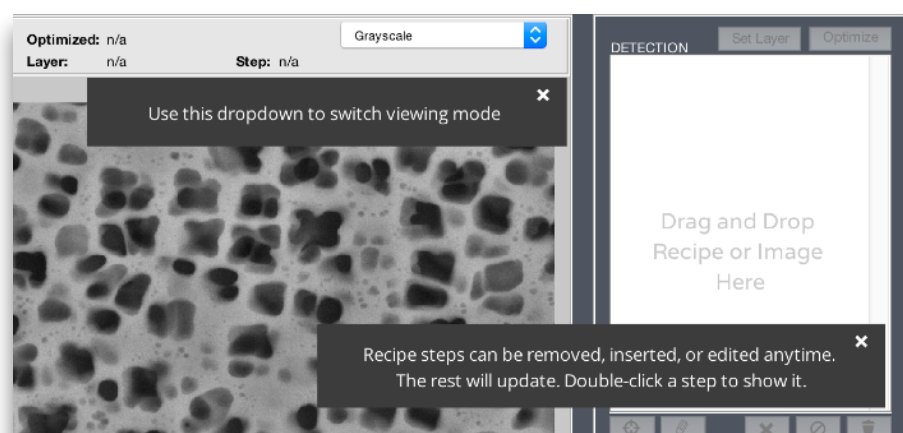
Future updates will be a breeze! Starting in v1.3.0, MIPAR will automatically check for updates on launch. Checks can also be triggered manually from the help menus. Major release announcements will still be made via email for users whose systems are run offline.

Guides and Tips

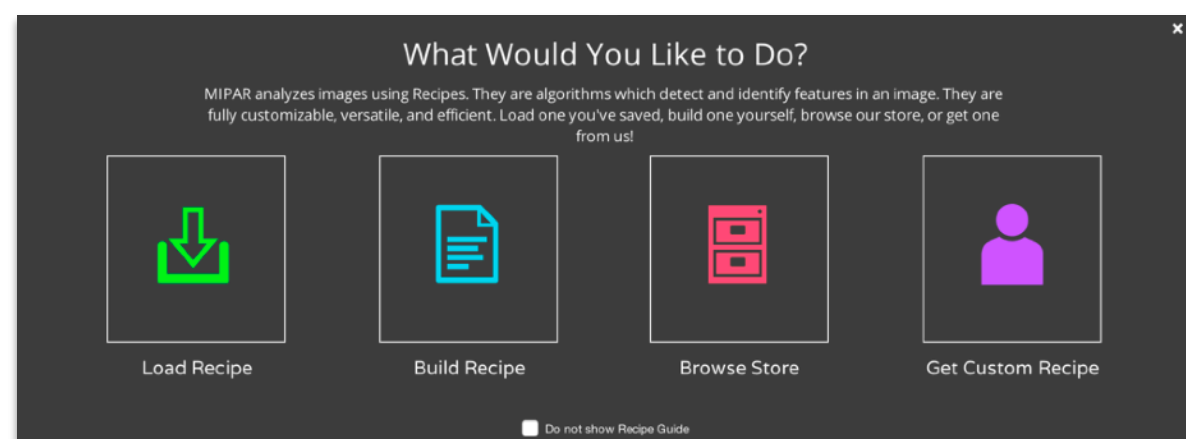


Startup Guide

Enjoy a more guided MIPAR experience than ever before. From launching, to opening an image, to building a recipe — help is here!

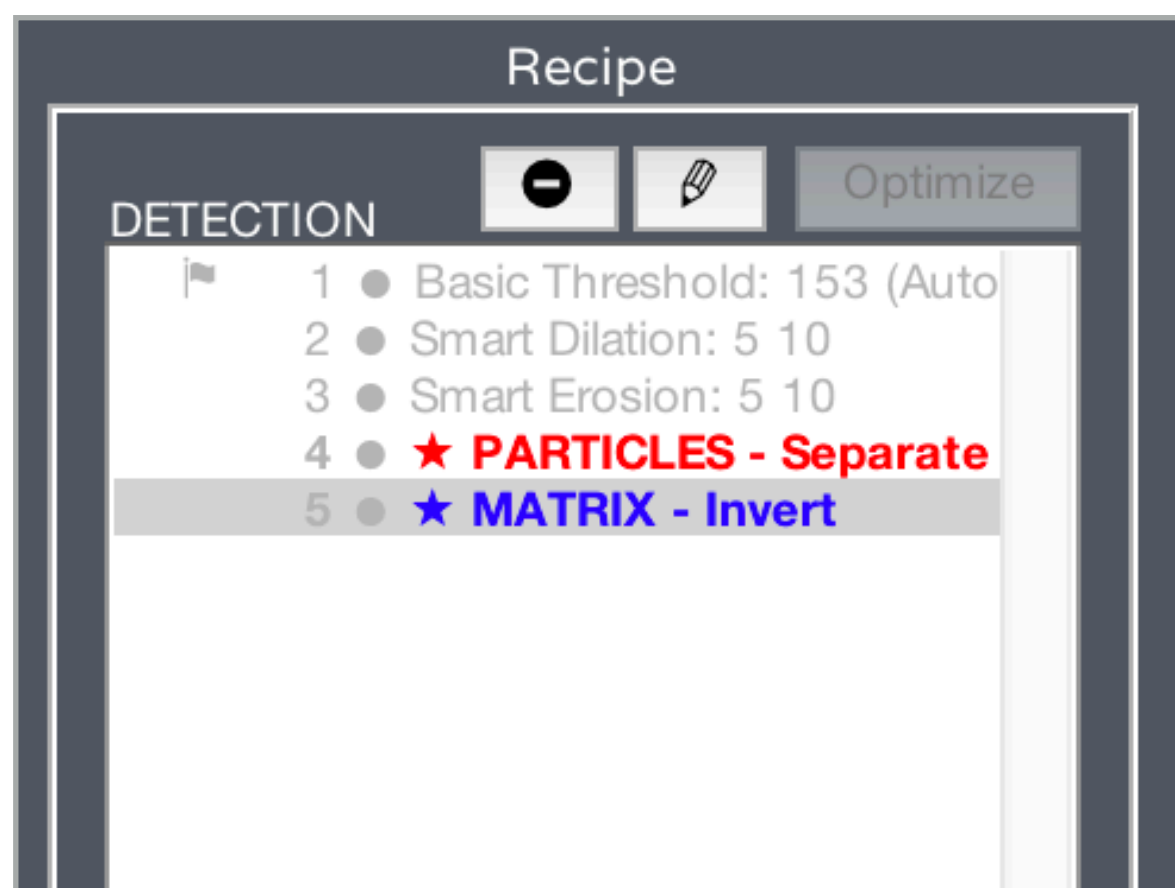


Tips

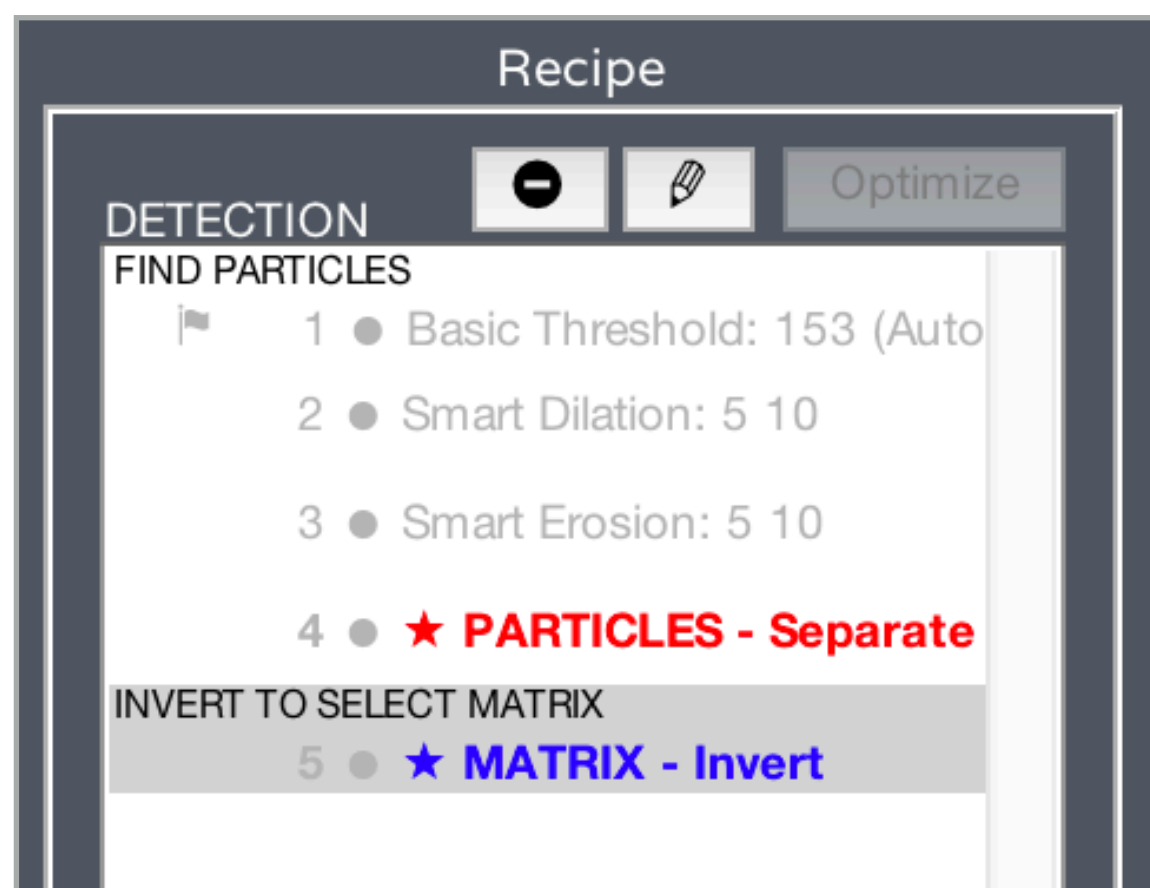
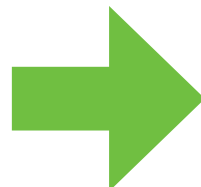


Recipe Guide

Recipe Chapters



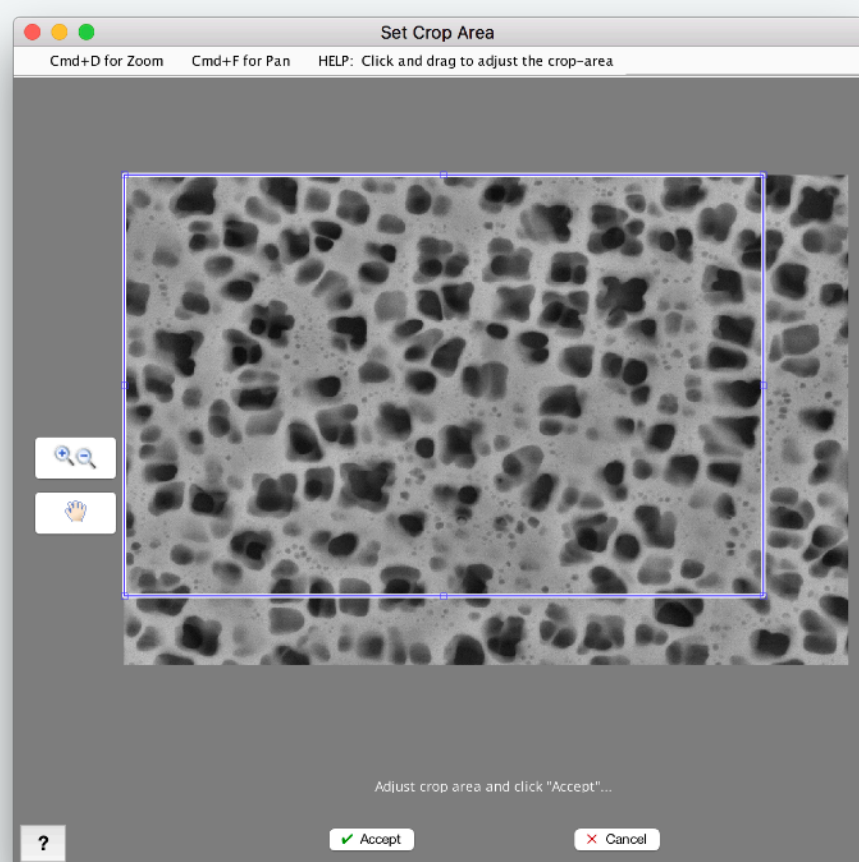
OLD



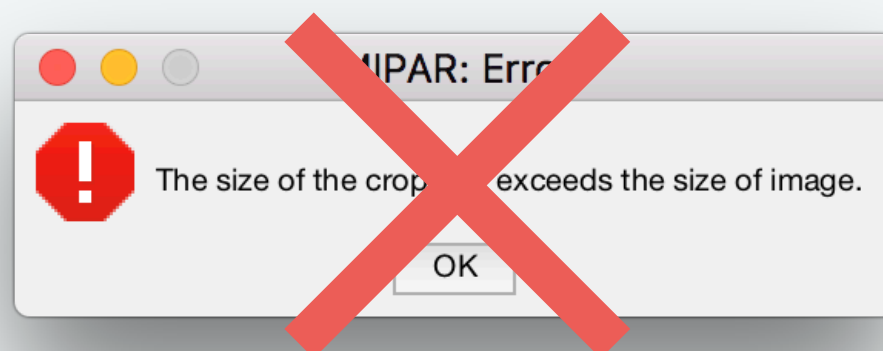
NEW

This one is big — and has the potential to transform how you read, build, and edit Recipes.

Now you can break them into sections (Chapters), with a intuitive name given to each! Certain steps trigger a new Chapter automatically, and you may add, edit, or remove chapters whenever you wish.



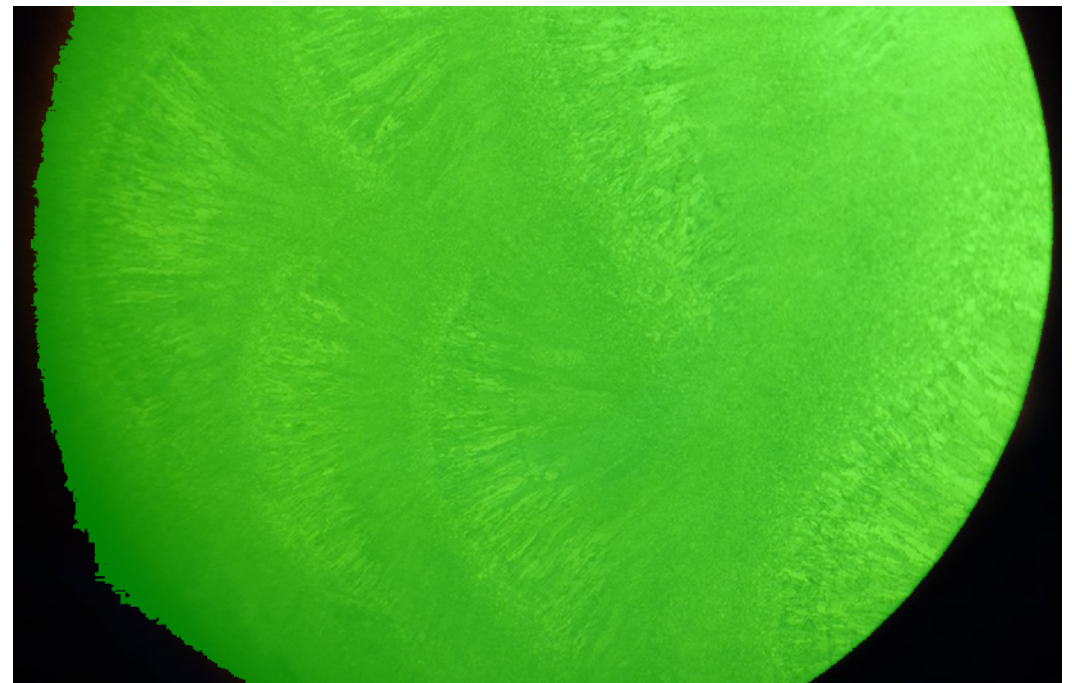
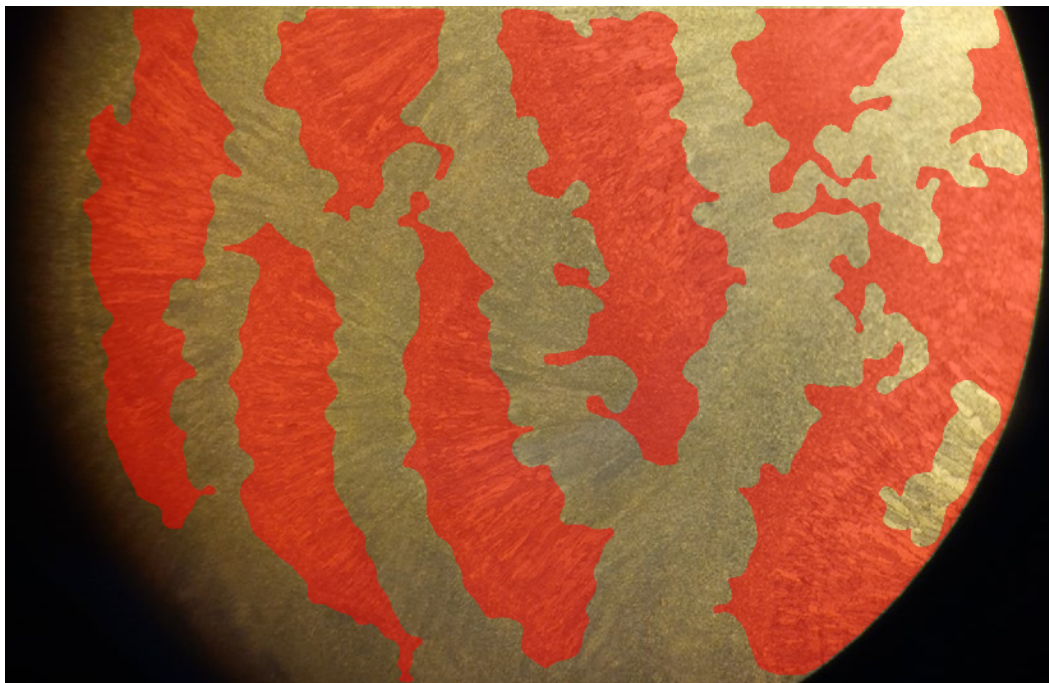
Interactive Crop Edit



A highly-requested feature — it will have a dramatic impact in two areas:

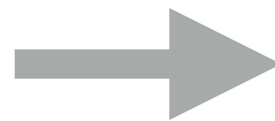
1. Edit a Crop step interactively, rather than typing in new coordinates blind.
2. No more “crop box exceeds image” errors! If this occurs during Recipe loading, you can now edit the crop real-time so that the Recipe loads!

Area Fraction Relative to AOI



When you want: **Red / Green**
Instead of: **Red / Entire Image**

Just set the area-of-interest (AOI) as a Memory Image. Now the *Area Fraction* measurement lets you choose this:



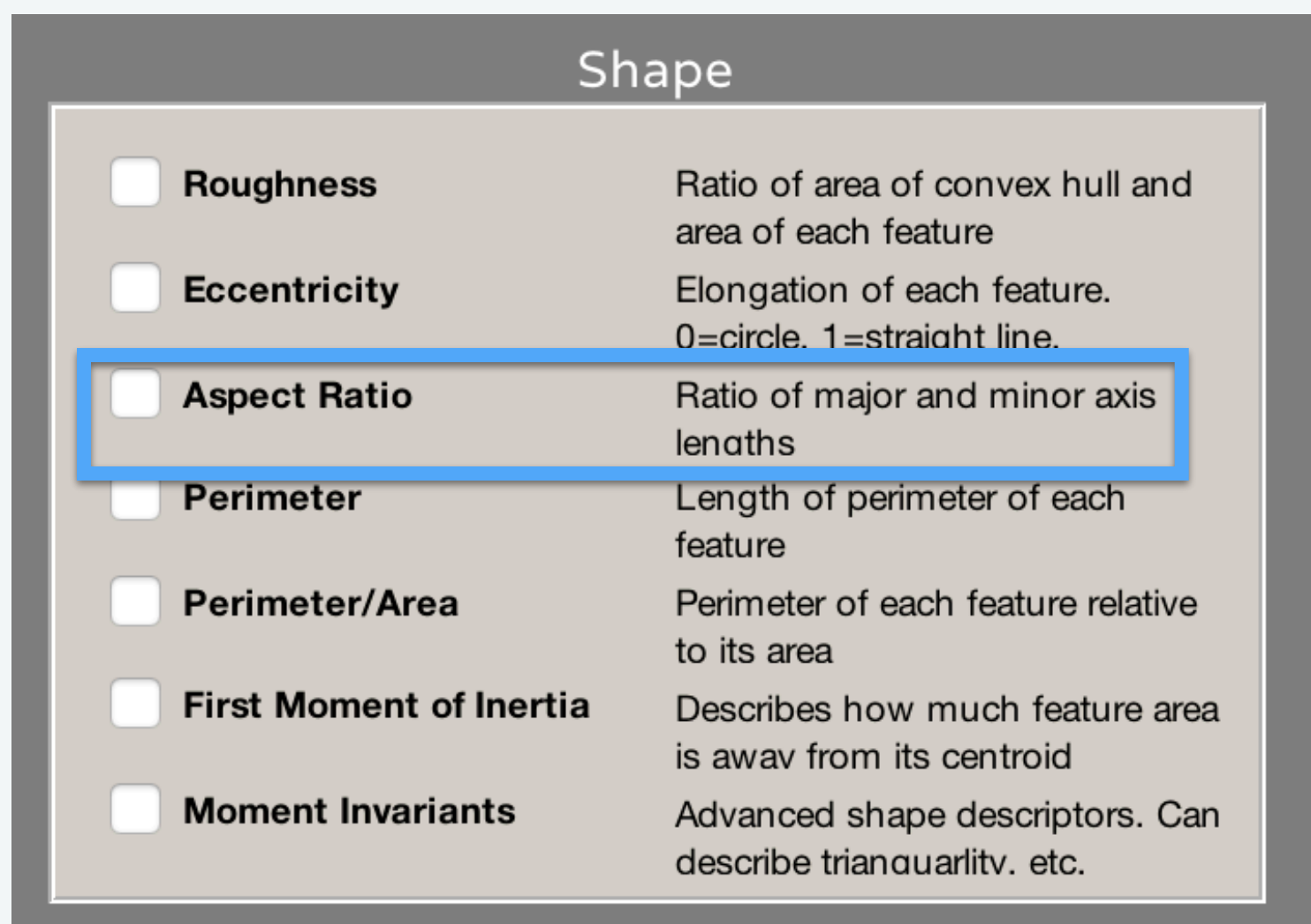
This works for *Number Density* and *Perimeter Fraction* as well!

Aspect Ratio

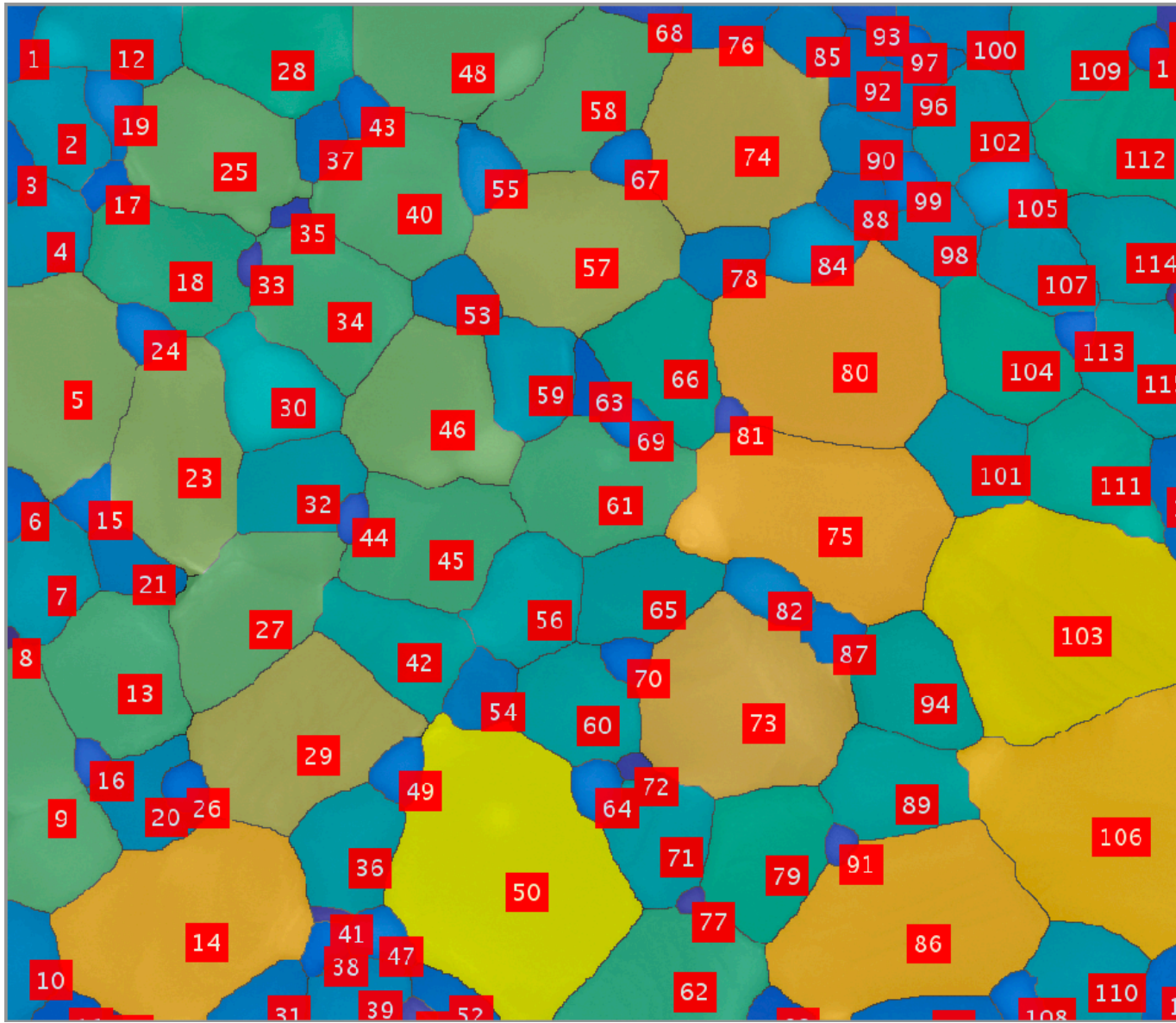
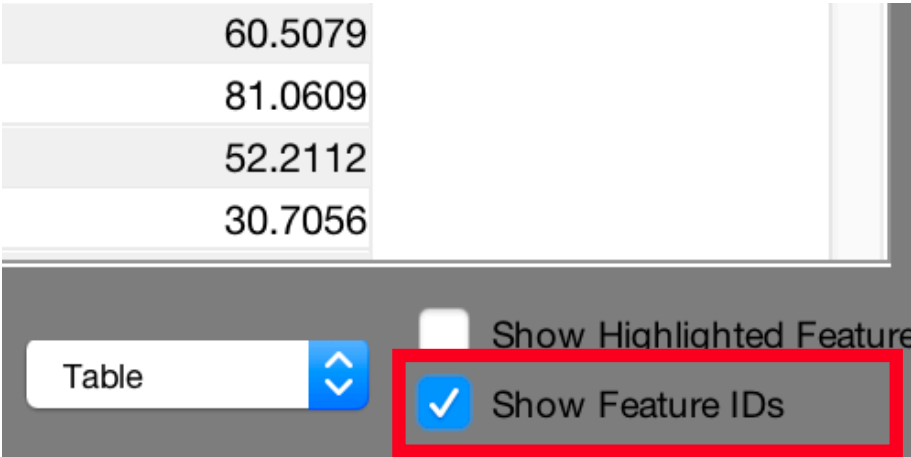


We have eccentricity, now we have aspect ratio too!

Make direct measurements of the ratios between the major and minor axis lengths of your features. Aspect ratio is now available throughout MIPAR, including *Reject Features*!



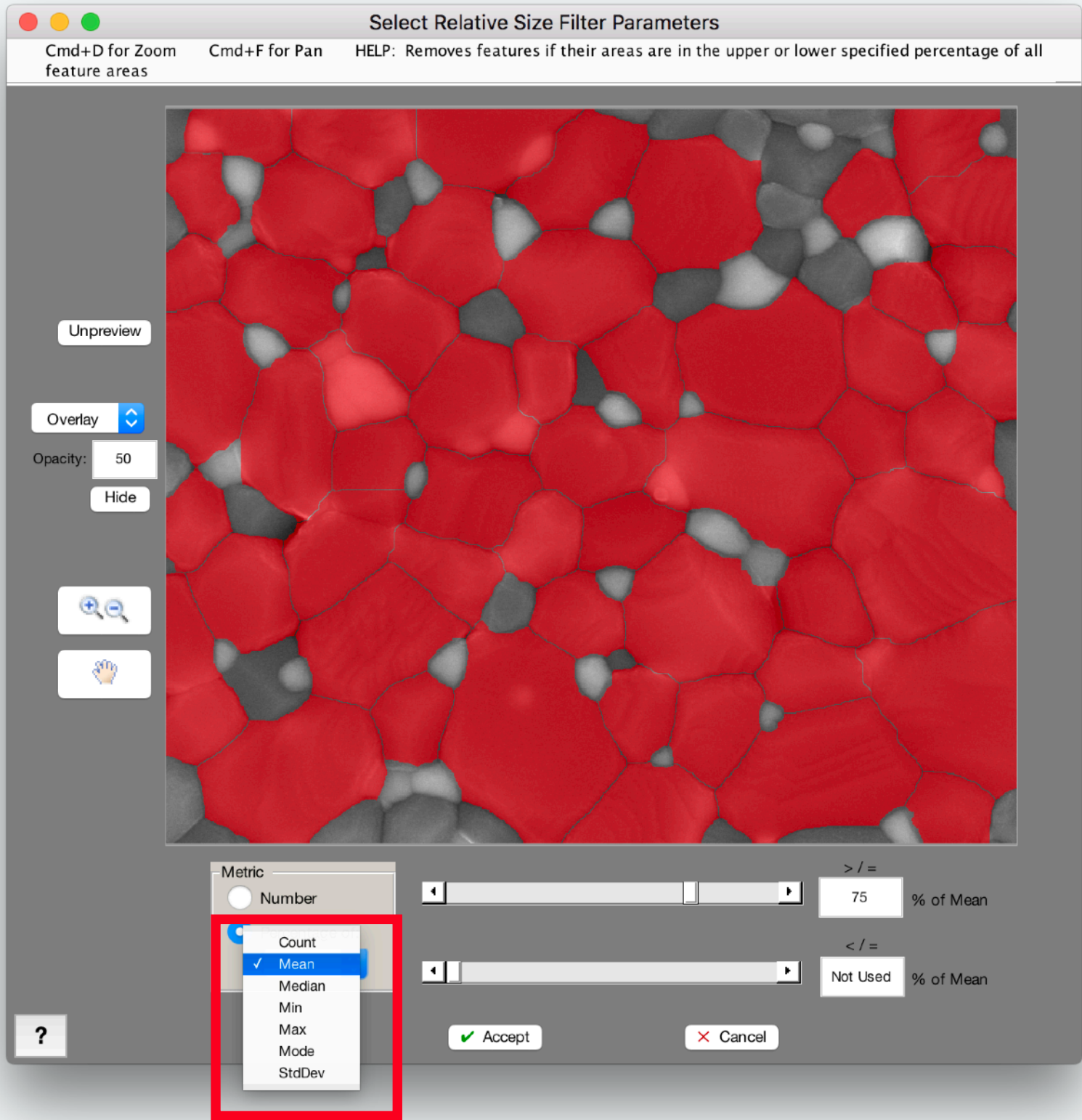
Show Feature ID Numbers



A simple checkbox in the Color By Measure tool displays each feature’s ID number at its center.

Now you’ll have an easier time sharing your exciting color-coded measurements with colleagues!

More “Percentage” Options



Now perform selections in the *Relative Size Filter* such as:

“Show me features that are larger than 75% of the mean.”

OR

“Show me features that are less than 50% of the max size.”

Other Changes

- Below/Above was renamed to Dark/Bright in *Adaptive Threshold* and *Basic Threshold*
- Renamed Convex Area/Area to Roughness throughout MIPAR
- Improper measurements errors no longer cancel Recipe upon loading

Bugs Fixed

- Fixed bug with *Generate Report* in Image Processor
- Fixed bug with some *Pattern Mapping* loading
- Fixed overlay bug in *Watershed* preview window
- Fixed ellipse tool bug in *FFT Filter* preview window
- Fixed bugs in *Relative Size Filter*
- Fixed case-sensitivity bug in “Channel Op” entry in Reference Image Panel
- Several stability improvements to Processed Image Editor