



# MIPAR™

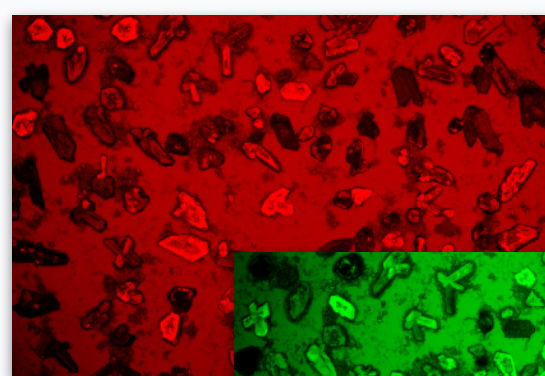
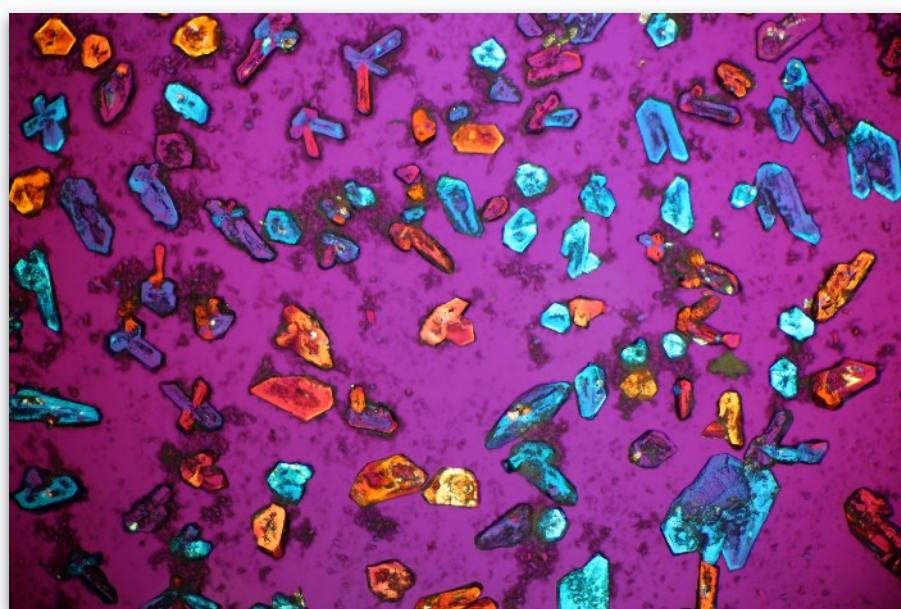
## Release Notes

1.5.0

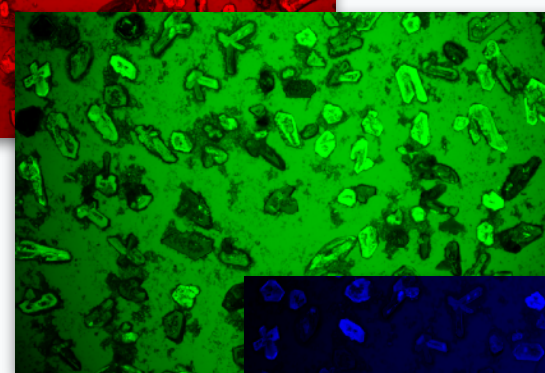
### Multi-Channel Image Overhaul

#### Up to 50 Channels

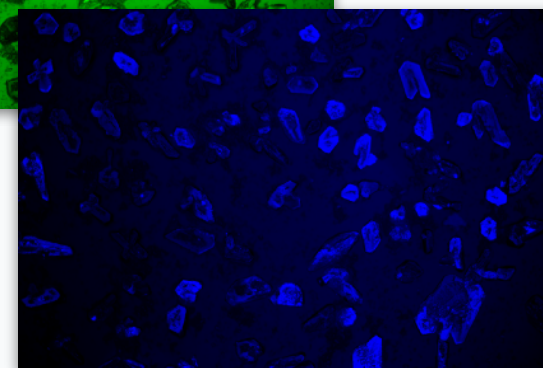
MIPAR is the first commercial software to support up to 50-channel images in standard and manufacturer formats.



c1



c2



c3

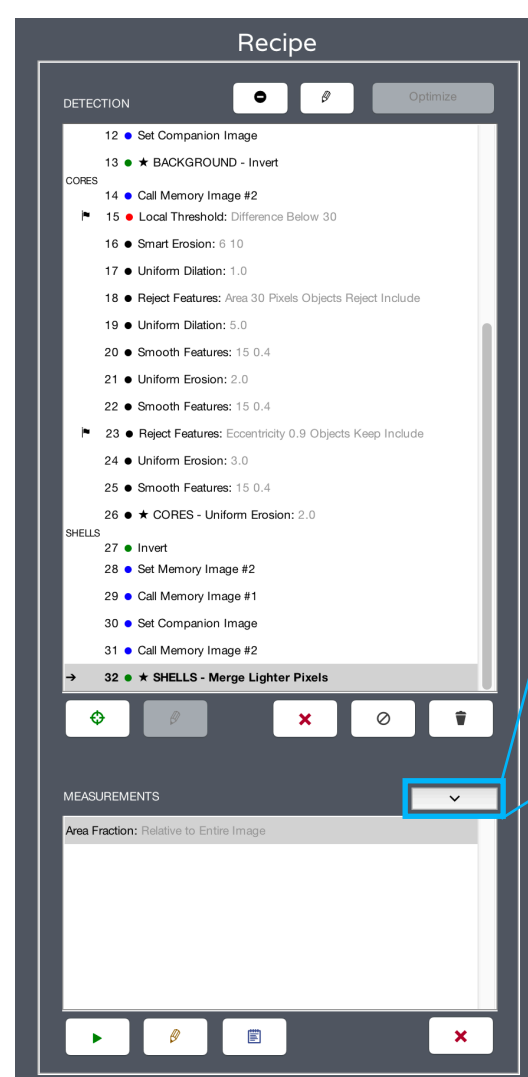


c50!

#### Call Channels with "c"

When entering a channel operation, you may now also refer to channels as c1, c2, c3, c4, etc.

### Hide Recipe Measurements Panel



SHOWN



HIDDEN

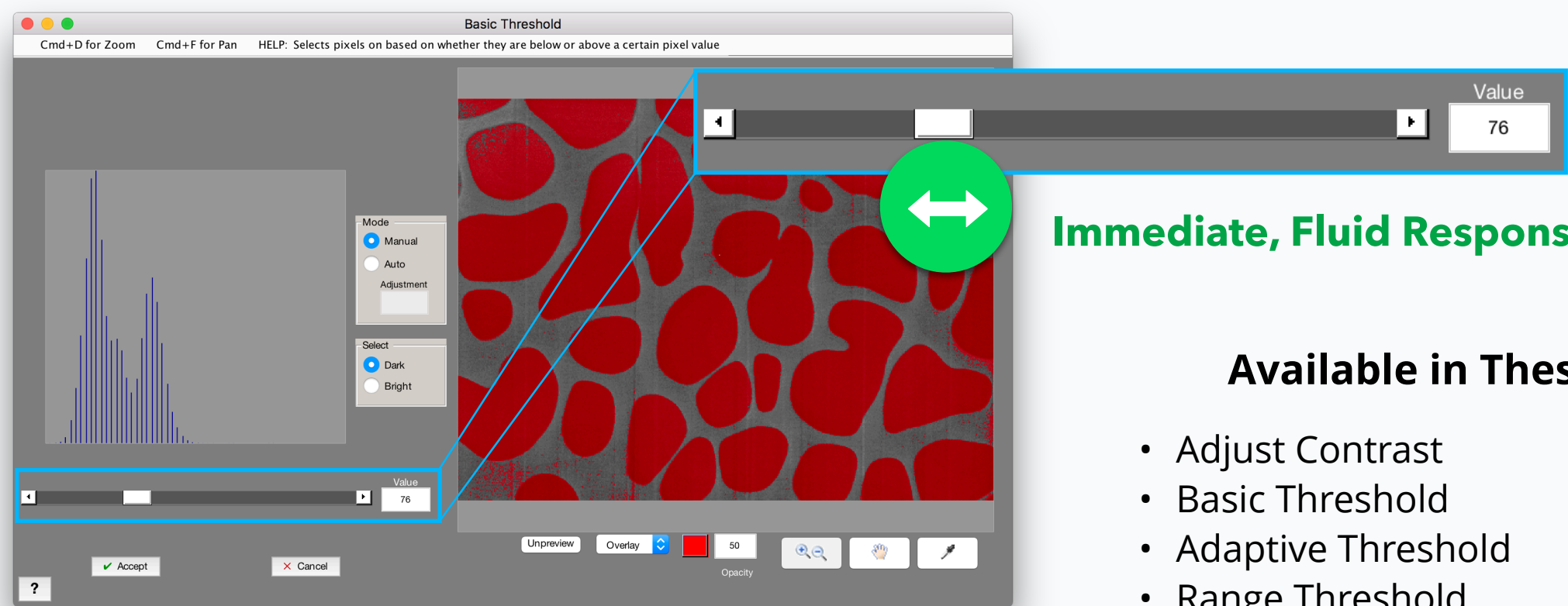
#### More Room to Work

The measurements panel in the recipe is now hidden by default, giving you 50% more space to create and edit your algorithms.

#### There When You Need Them

The measurements panel will automatically reappear when measurements are added. You can also show/hide any time with the new control.

# Continuous Sliders

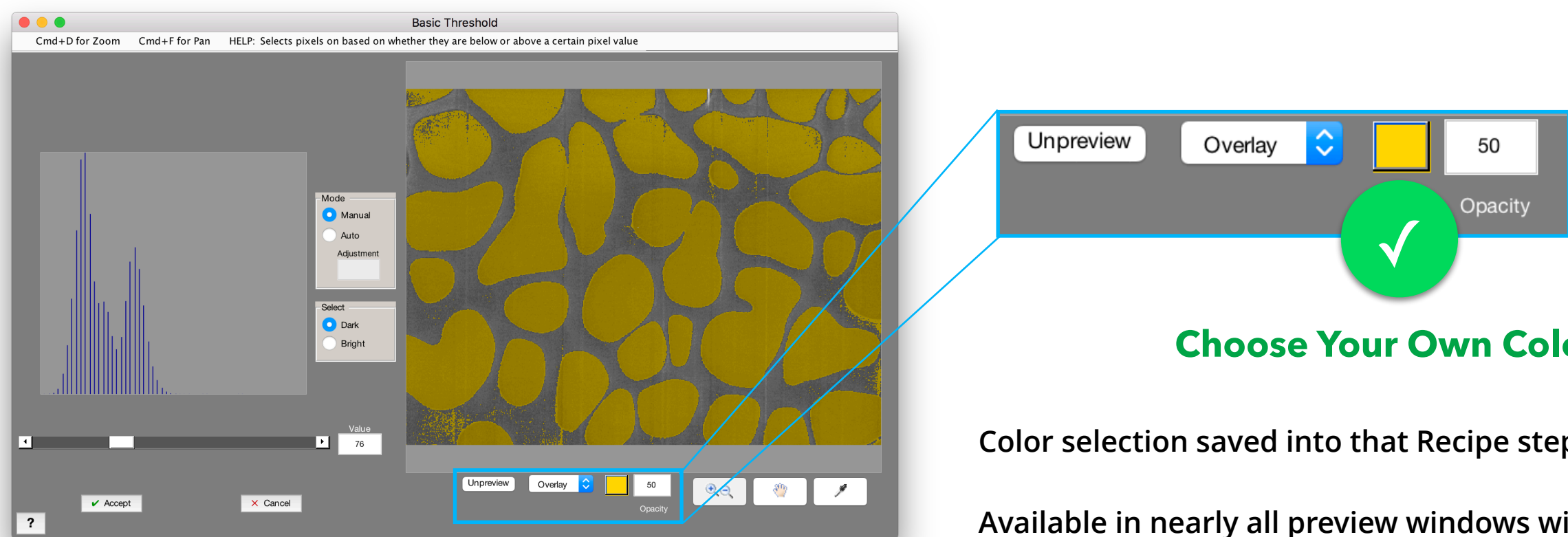


Immediate, Fluid Response

## Available in These Functions:

- Adjust Contrast
- Basic Threshold
- Adaptive Threshold
- Range Threshold
- EM Threshold
- Find Edges
- Uniform Dilation
- Uniform Erosion
- Find Local Min
- Find Local Max
- Throughout 3D Toolbox

# Preview Window Color Selection



Choose Your Own Color

Color selection saved into that Recipe step

Available in nearly all preview windows with a Viewing Mode dropdown

# Color-Code Global Measurements

Rows color-coded to their Layers

Layer	Area Fraction (%)	Number of Features	Area (um^2)
Cortex	56.5510	1	230166
Stele	14.7200	1	59912
Vessels	3.4750	12	14142
Air Spaces	13.1210	21	53402
Cell Walls	10.7750	2	43857
Cells	11.5150	569	46865

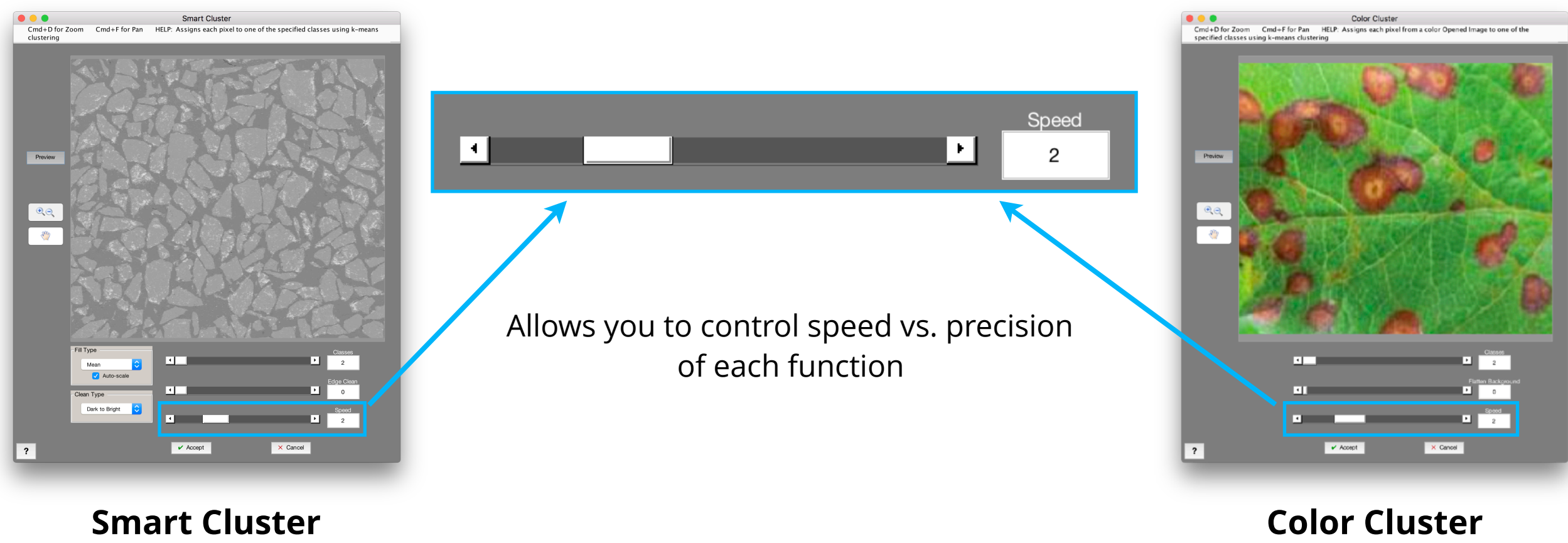
OLD

Layer	Area Fraction (%)	Number of Features	Area (um^2)
Cortex	56.5510	1	230166
Stele	14.7200	1	59912
Vessels	3.4750	12	14142
Air Spaces	13.1210	21	53402
Cell Walls	10.7750	2	43857
Cells	11.5150	569	46865

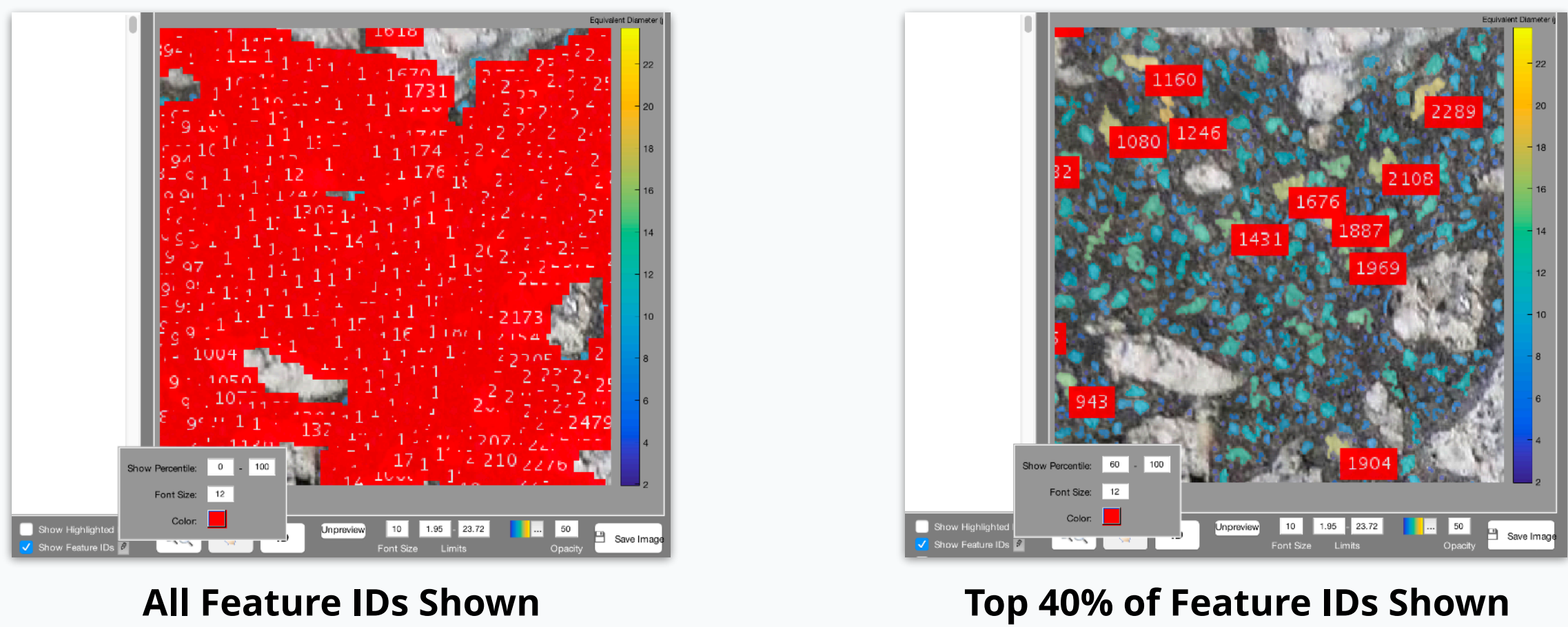
NEW



# Speed Settings: Smart Cluster and Color Cluster

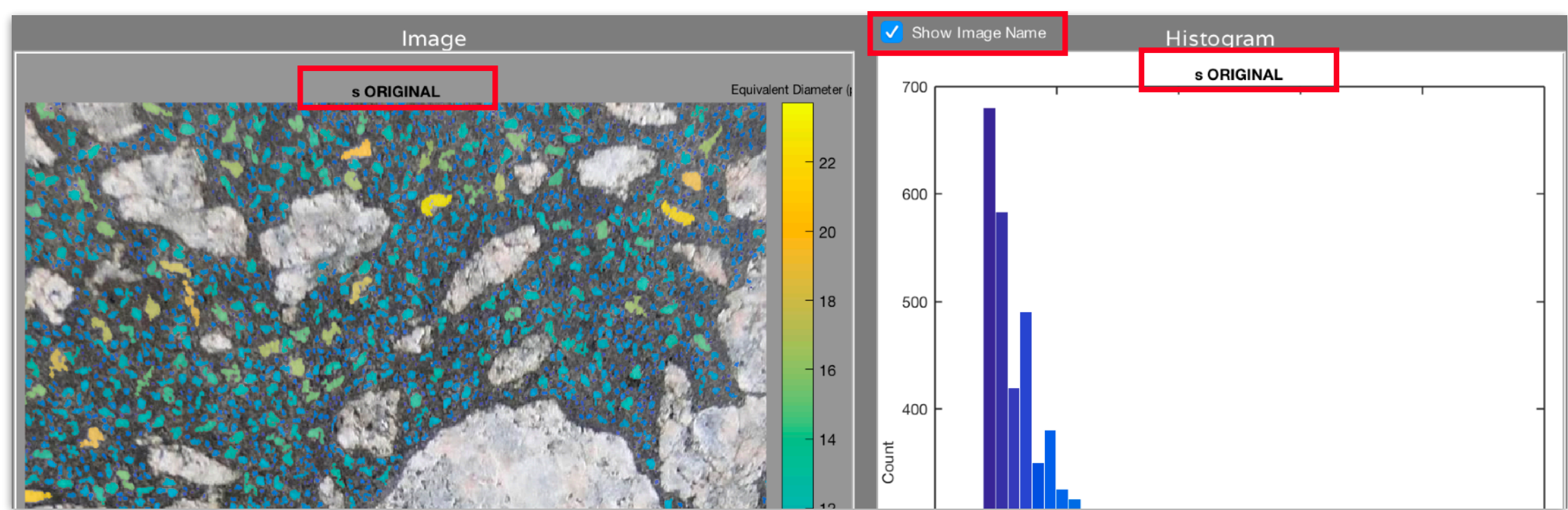


# Feature ID Labelling: Percentage Control



# Name on Image and Histogram

Choose to print the image name above image and histogram in both Color by Measure and Local Measure

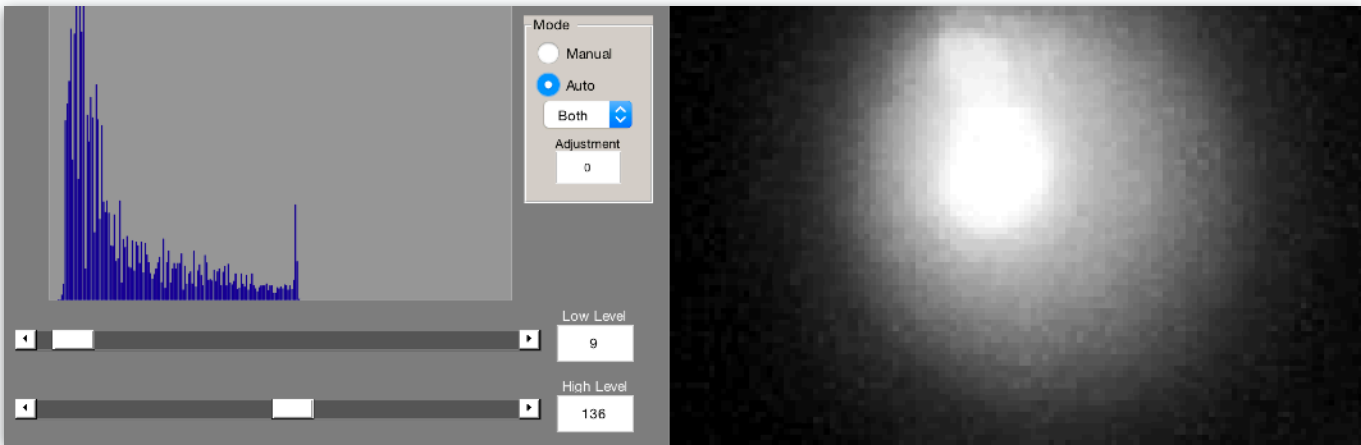




# Adjust Contrast: Auto-Min and Auto-Max

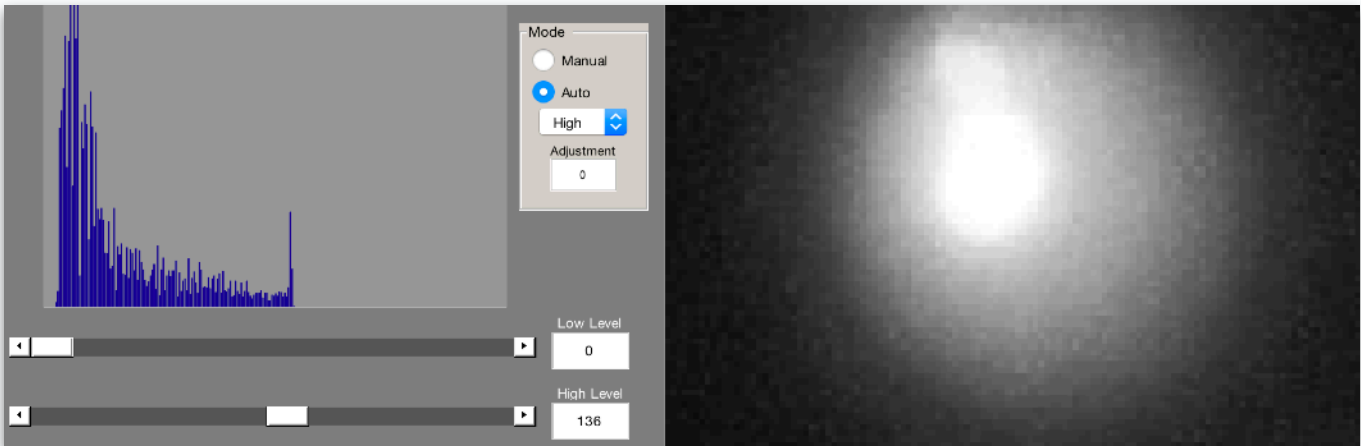
## Both

Low and high pixel limits are both set automatically. Useful for normalizing contrast.



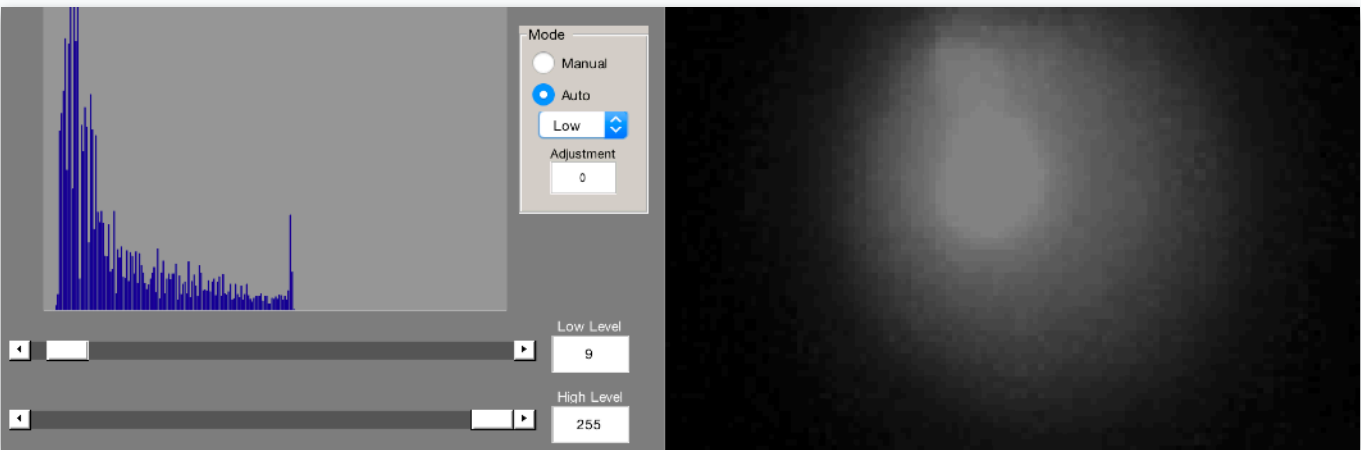
## High NEW

High pixel limit is set automatically and low limit is left at 0. Useful for white balancing backgrounds.



## Low NEW

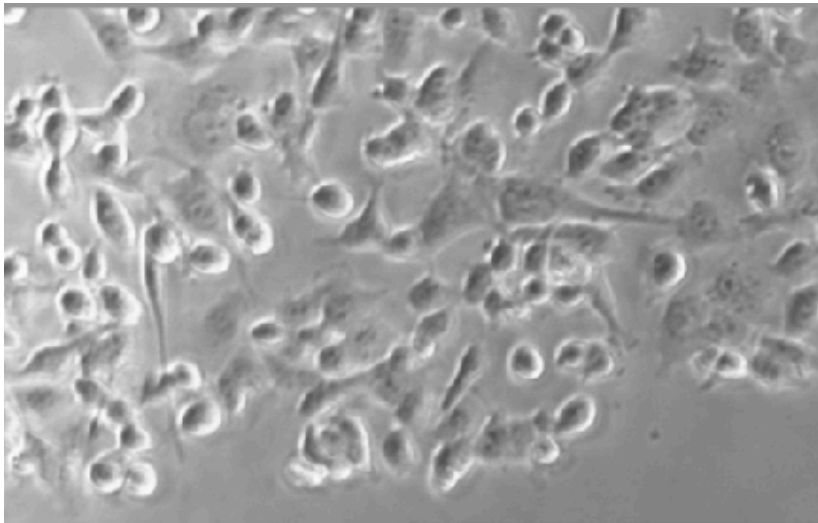
Low pixel limit is set automatically and high limit is left at 255. Useful for black balancing backgrounds.



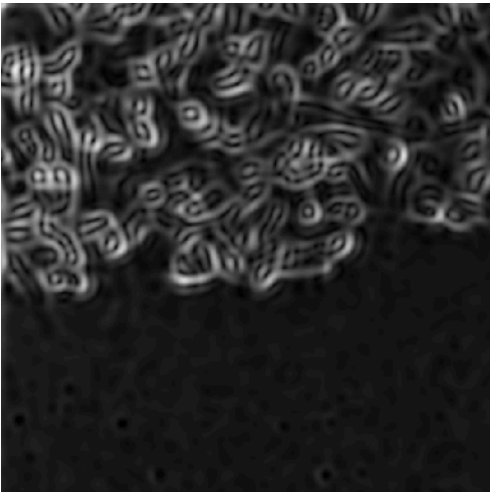
# New Function: Find Texture

A playground of new algorithms to accentuate various types of image texture, making Recipes even more powerful.

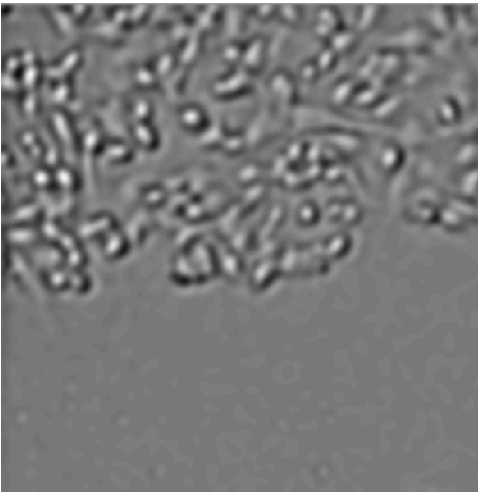
Original Image



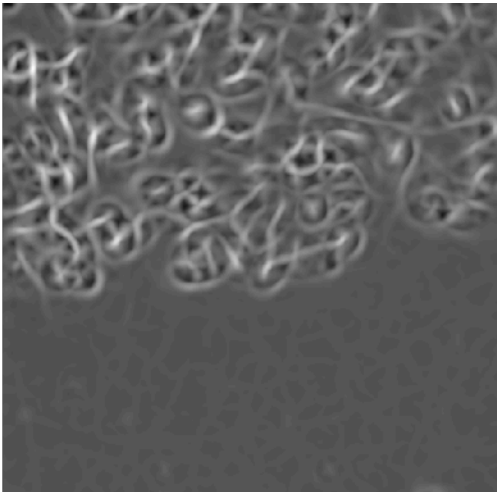
Module



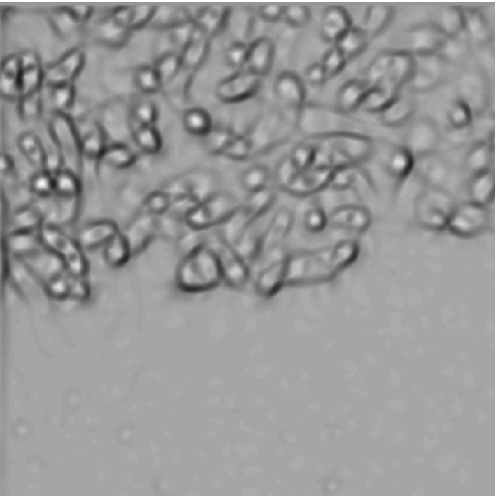
Trace



First Eigen



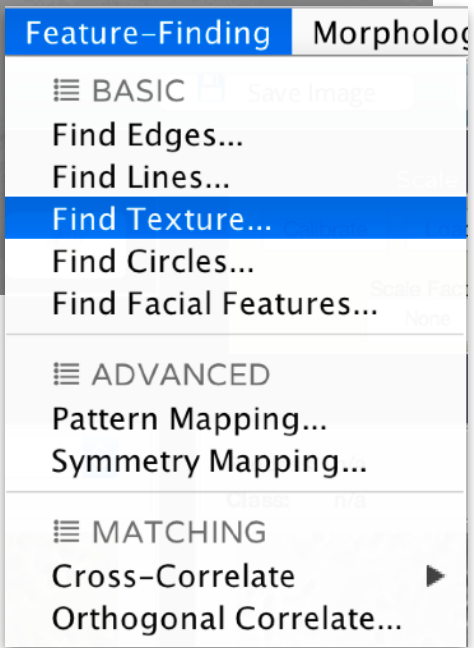
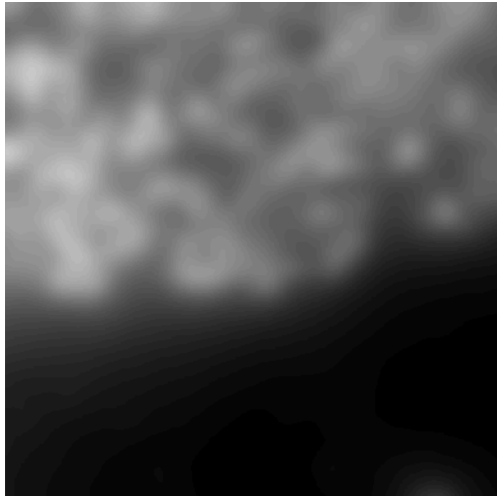
Second Eigen



Square Eigen Diff

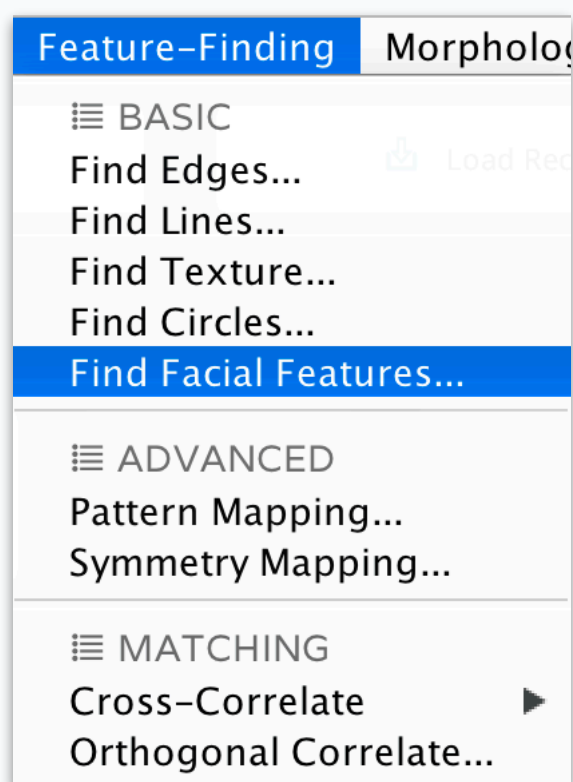


Gabor



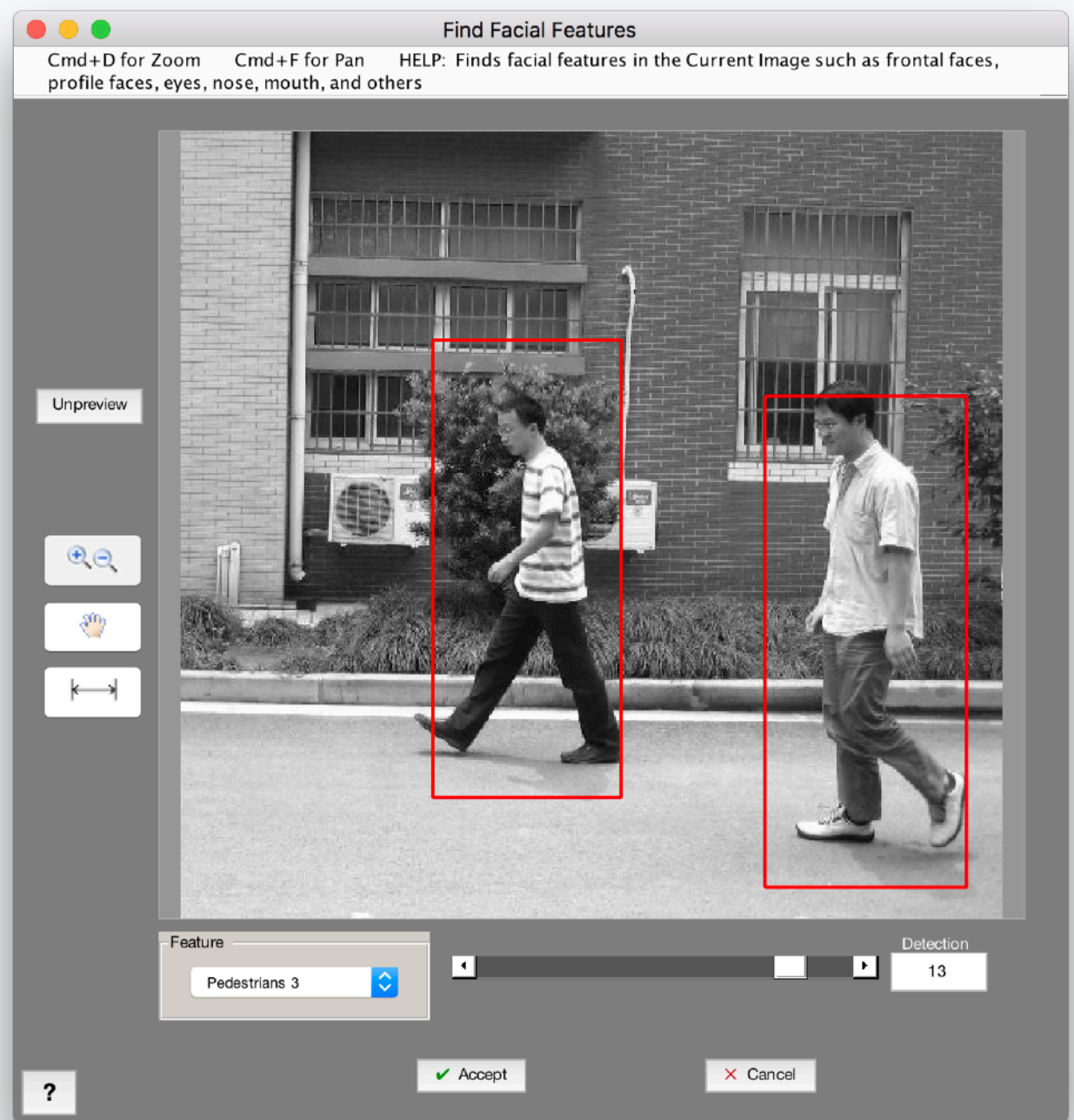


# New Function: Pedestrian Detection



## MIPAR keeps expanding!

The *Find Faces* function has been outfit with multiple pedestrian detection algorithms.



## Bug Fixes

- Bug which caused MIPAR to crash during some freehand and pen tracing has been fixed
- Over 50 other fixes and improvements

## Other Notable Changes

- *Color Cluster* will now consistently label the same classes in the same order across images
- *Find Lines* edge artifacts have been removed
- *Top-Hat* and *Bottom-Hat* Filters have been renamed to *Bright Texture* and *Dark Texture*, respectively
- Several windows will no longer prompt to confirm cancellation if no edits have been made
- Section grid size for parallel CPU operations has been added to Preferences
- You may now press "Enter" to calculate Scale Factor in the Calibration Window
- Recipe Chapter names will now print during Recipe loading instead of each step name