

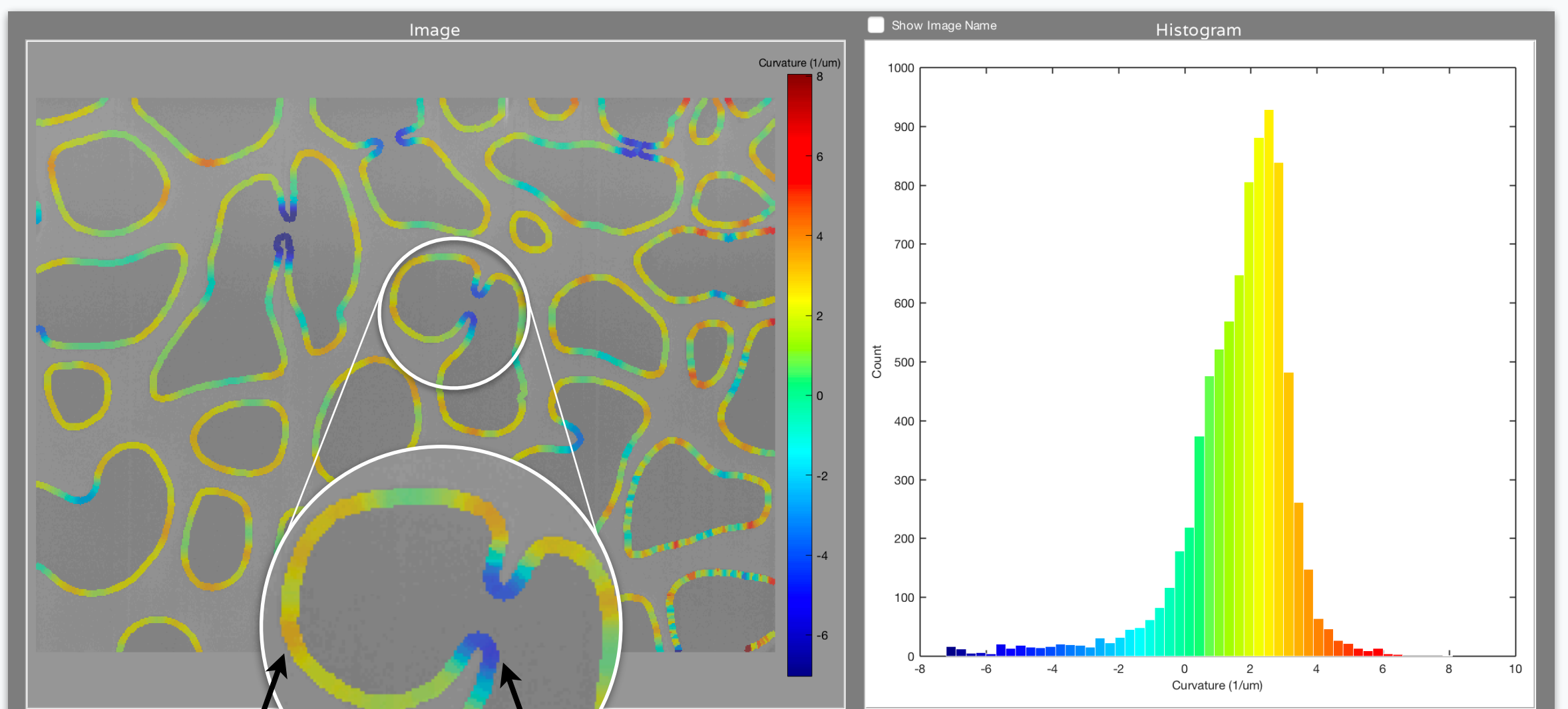


MIPAR™

Release Notes

1.5.2

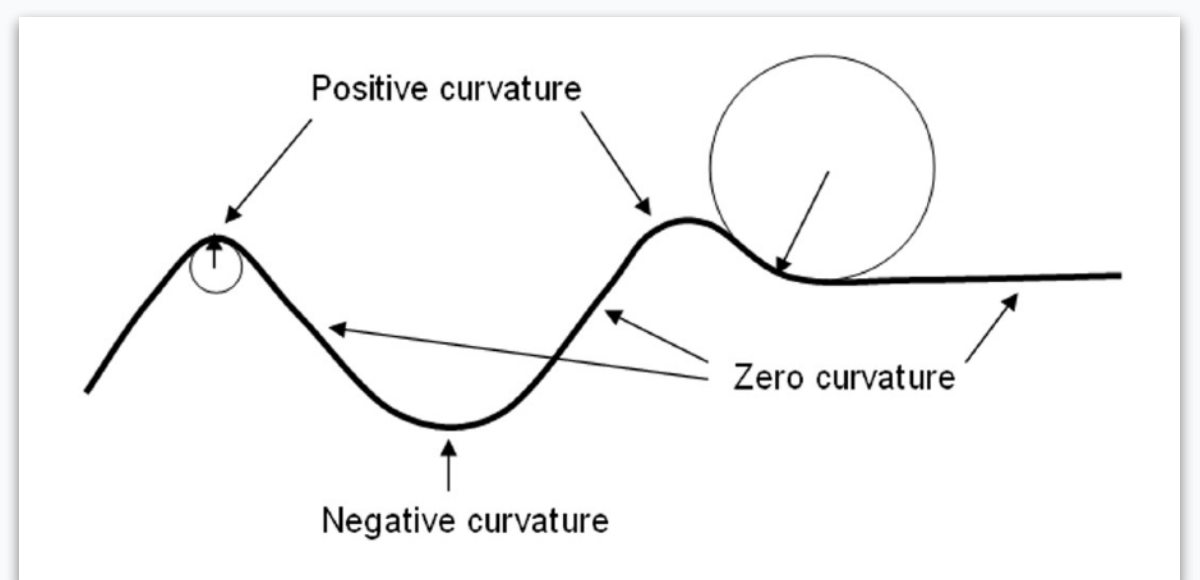
Local Curvature



High positive
curvature

High negative
curvature

We've added an exciting new
measurement to *Local Measure*:
Curvature

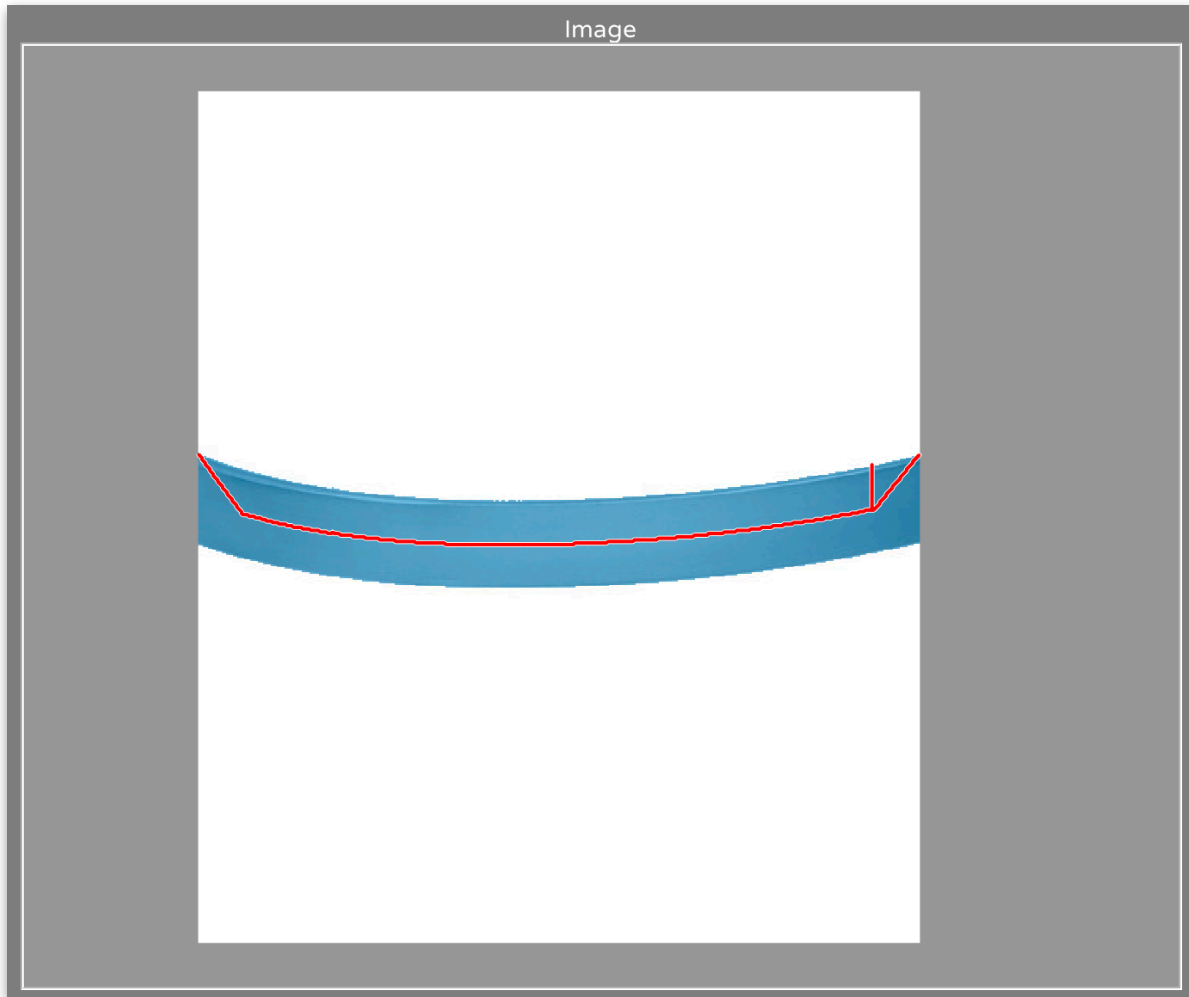


It's **powerful**, can offer valuable **new insights**, and it's **fast**!

Local Thickness: Smooth Skeleton

New “**Smooth**” option for local thickness measurements

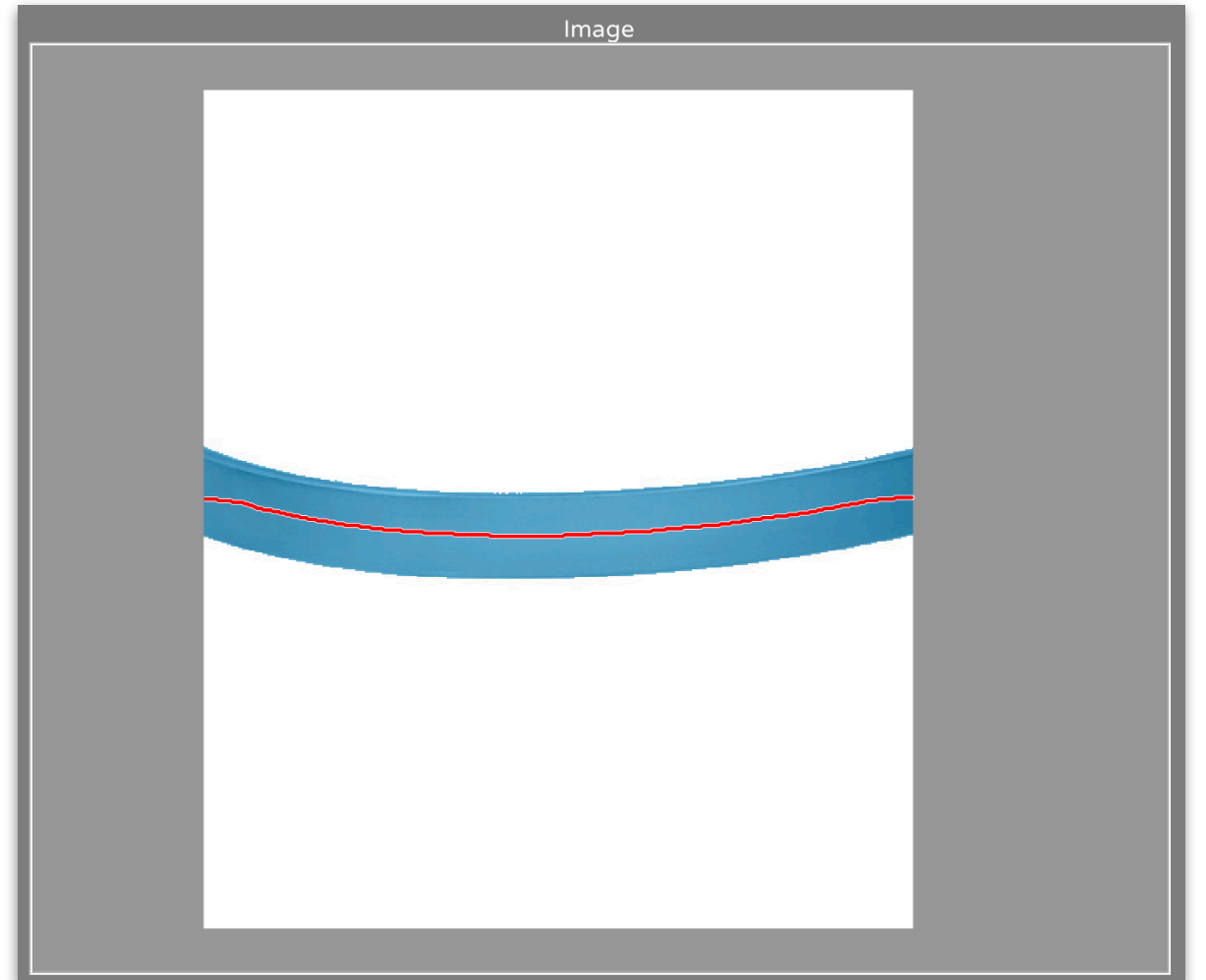
BEFORE



Method: Advanced

Great for precise measurements of complex features.
Not so great for simpler features.

AFTER



Method: Smooth

Ideal for simpler, curved features.

Bug Fixes and Other Changes

- Fixed bug which affected the saving of histogram plots
- Fixed bug with the execution of some 3D feature measurements
- Fixed bug with running some pre-processing filters on very small images
- Global measurements report now displays to the left of Current Image upon loading Recipe
- Reduced edge artifacts in *Sharpen*
- Over 20 other fixes and enhancements