



# MIPAR™

## Release Notes

### 1.5.5

## Print Scale Bars



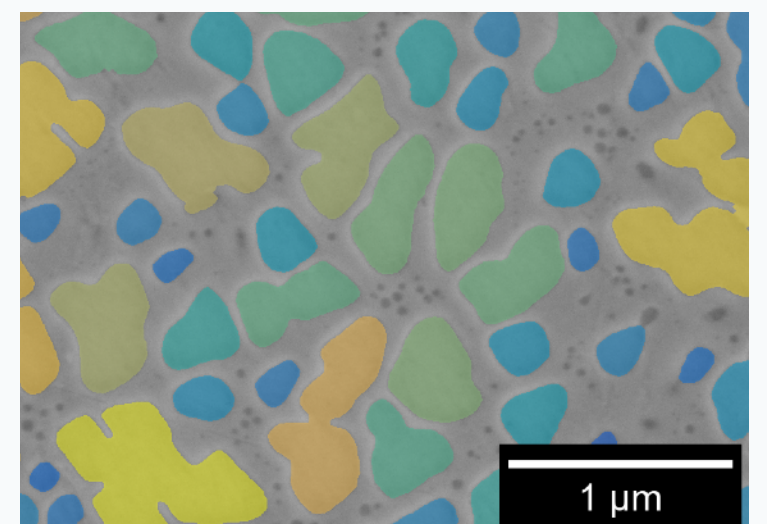
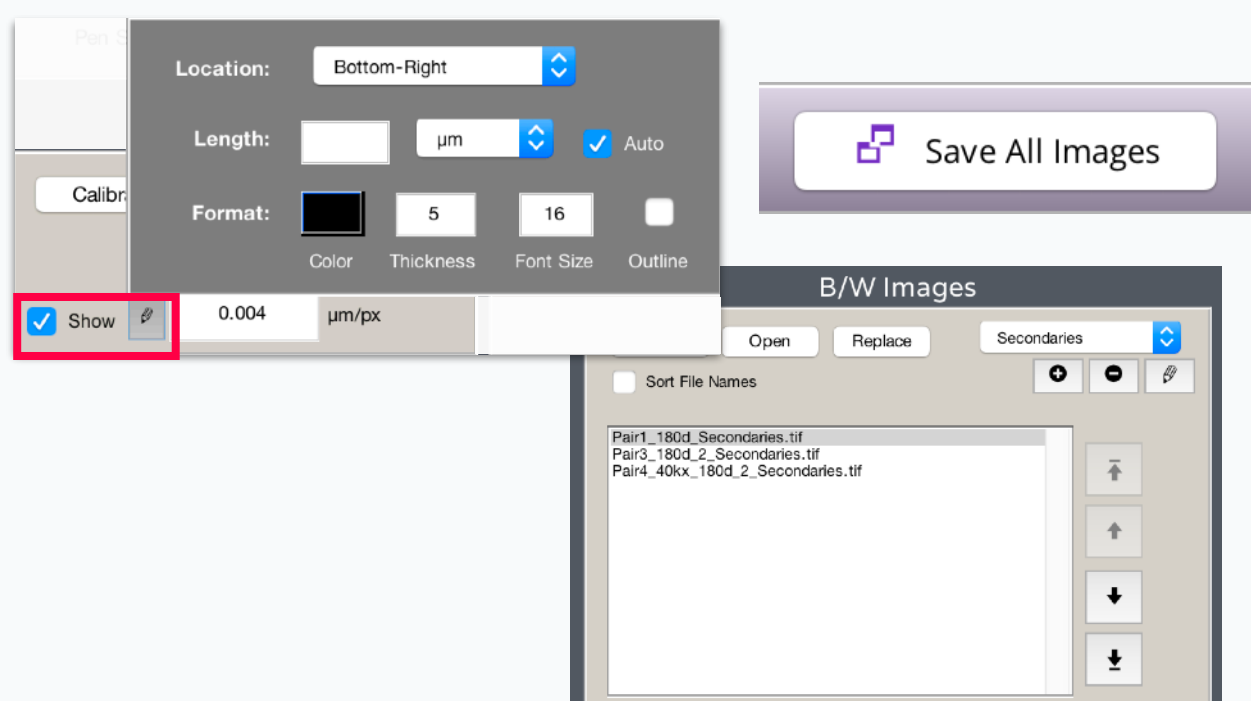
## It's Here!

Easily add a scale bar to your image. It's simple, customizable, and looks great!

Show the bar, save the image, and it burns right in!

## Single Images

*Image Processor*



## Colorized Measurements

*Color by Measure | Local Measure*

## And...

*Edit > Burn Scale Bar*

Add scale bar printing as a step in a "Make Ready to Publish" Recipe!

## Batches of Images

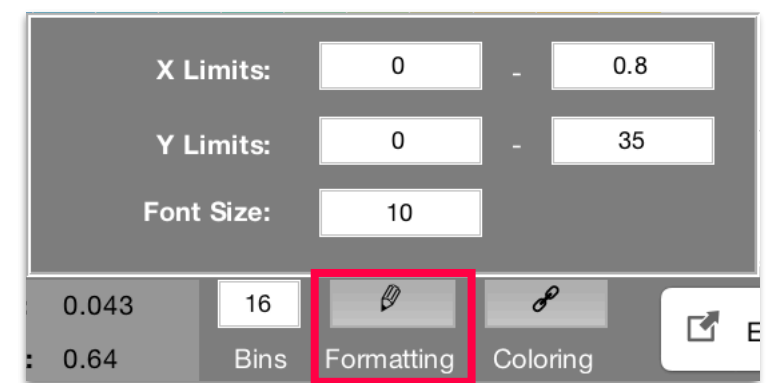
*Processed Image Editor*

# Histogram Limits

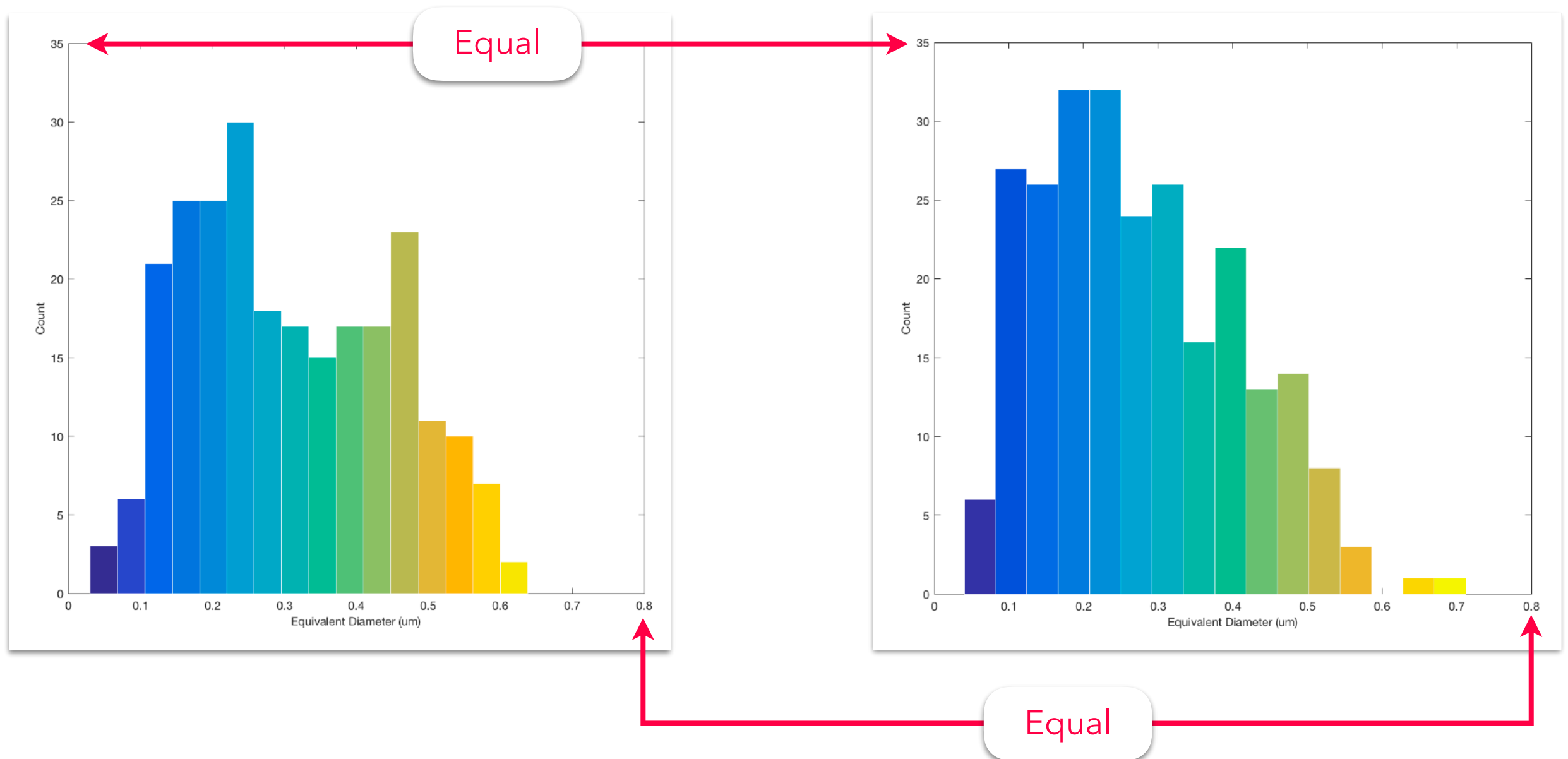
## Better for Reports

New “Formatting” panel lets you customize the X and Y limits of your histograms.

Find it in *Color By Measure*, *Local Measure*, and *Histogram of Measurements*.



Lock in consistent limits for better comparisons between images.



## Bug Fixes and Other Changes

- Dramatically improved font scaling on histogram and colorbar axes
- New dark settings panels in preview windows
- All global measurement windows will now appear offset to the left of the Current Image
- Fixed bug which affected batch nearest-neighbor measurements of blank images
- Fixed bug which affected batch saving overlays on 16-bit grayscale images
- Over 10 other fixes and enhancements