

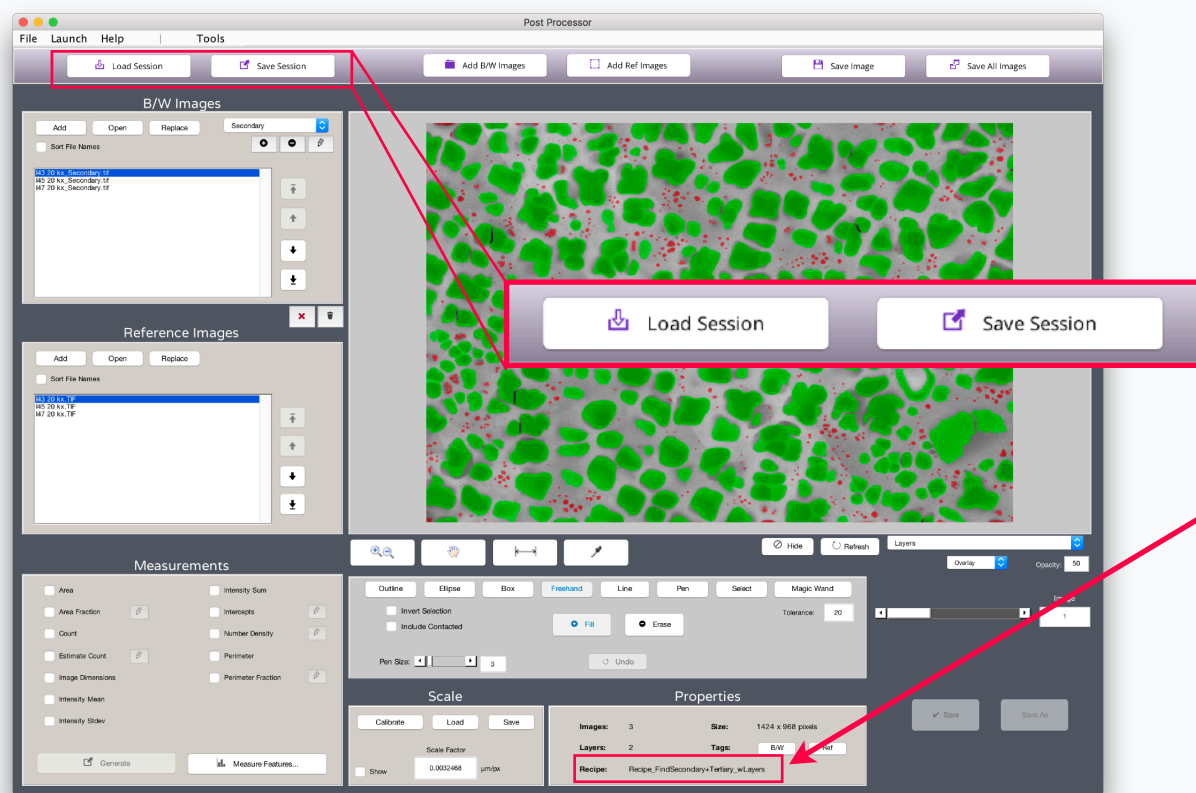


MIPAR™

Release Notes

1.6.0

Post Processor Sessions



Processed Image Editor is now
Post Processor!

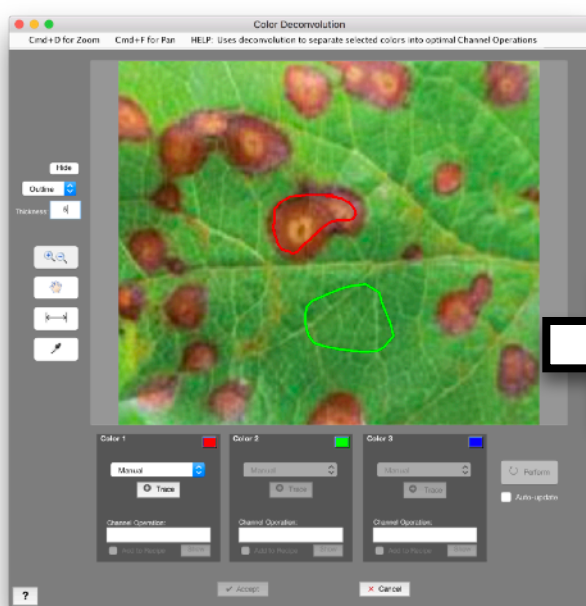
Save and Load Sessions with a Click

All your Layers and Reference Images come right back.

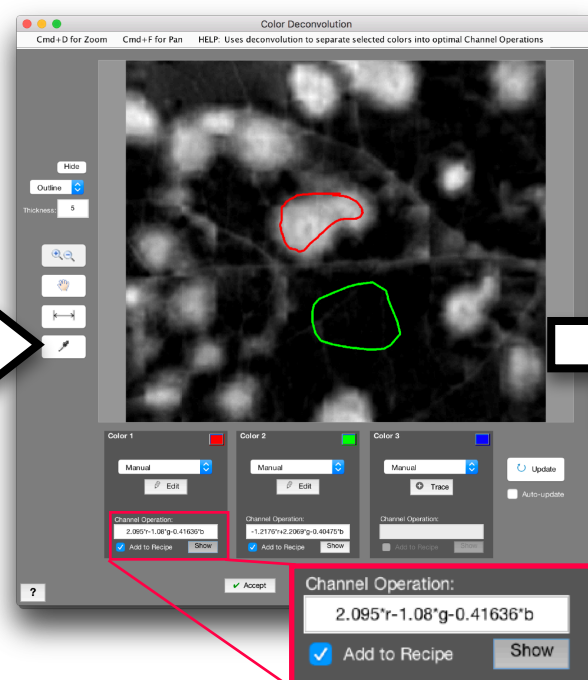
Other useful info stored in Session file such as Recipe name.

Batch Processor and Real-Time Processor now save Session files automatically.

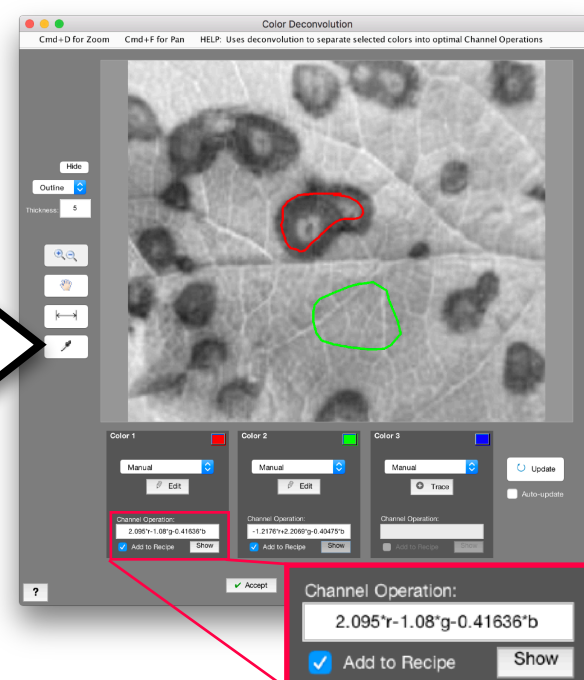
Color Deconvolution



Trace in 2 or 3 colors



Channel Operation to
"light up" color 1



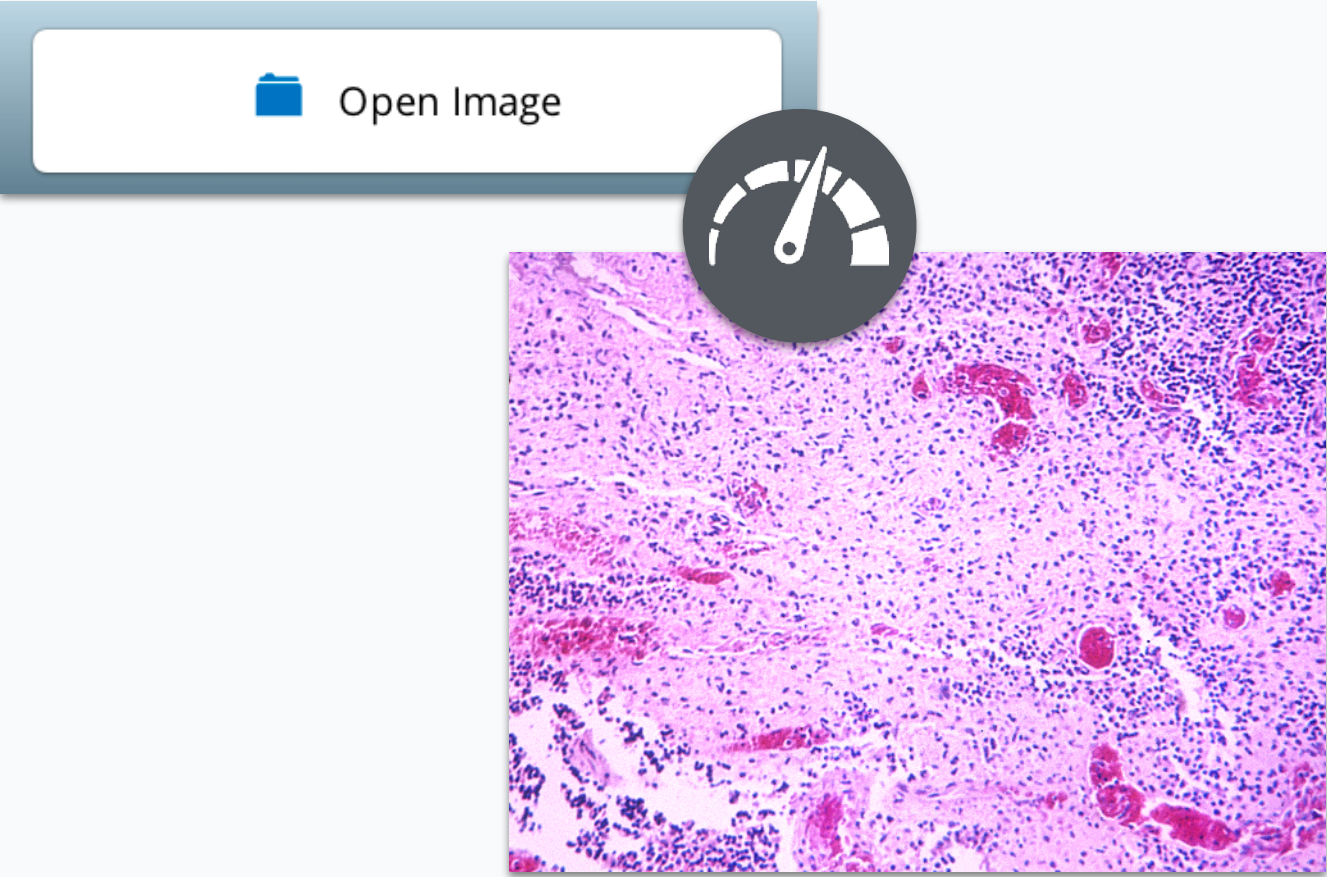
Channel Operation to
"light up" color 2



Channel Operations
output as Recipe steps

[See it In Action »](#)

Faster Image Opening



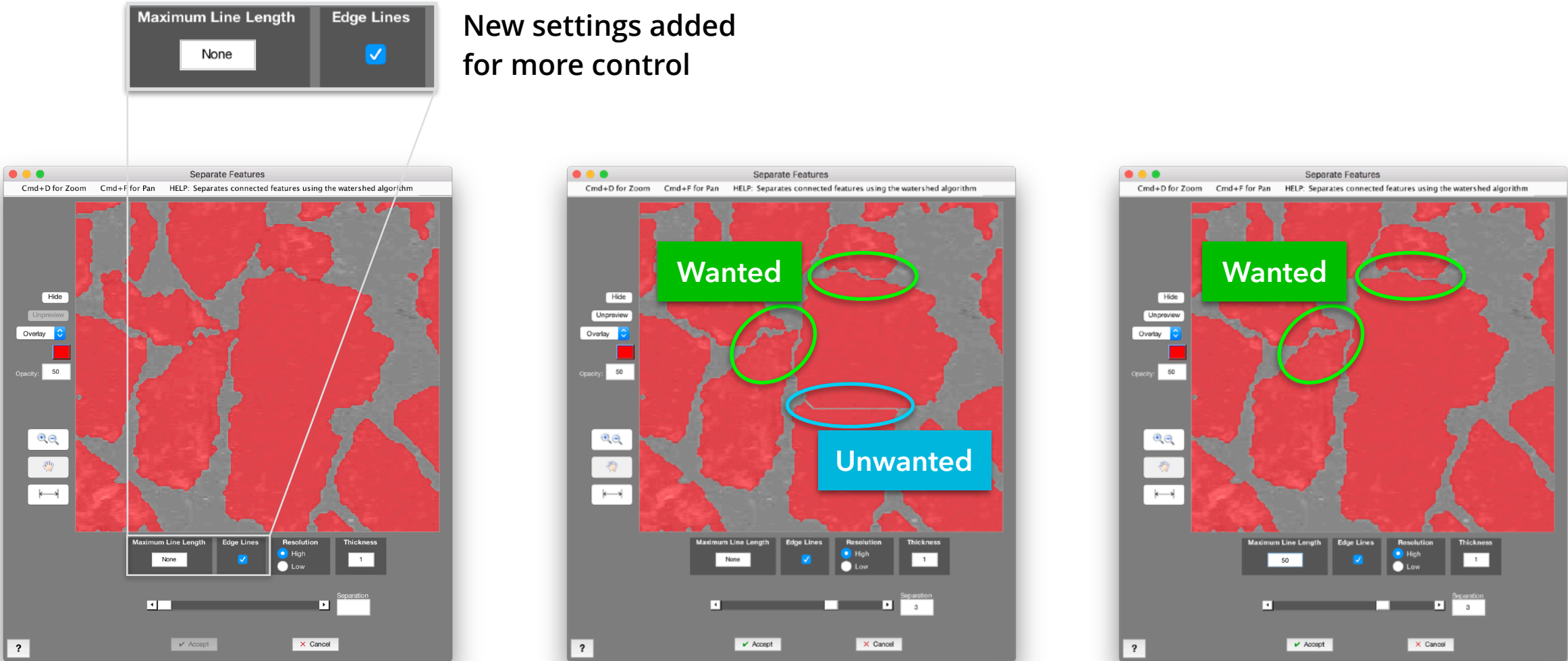
Load Times Improved up to 30%

Images now open faster! Improvement is even greater for larger images.

Better Memory Usage

Overall memory allocation has also improved up to **10x**, especially for large images.

Enhanced Separate Features



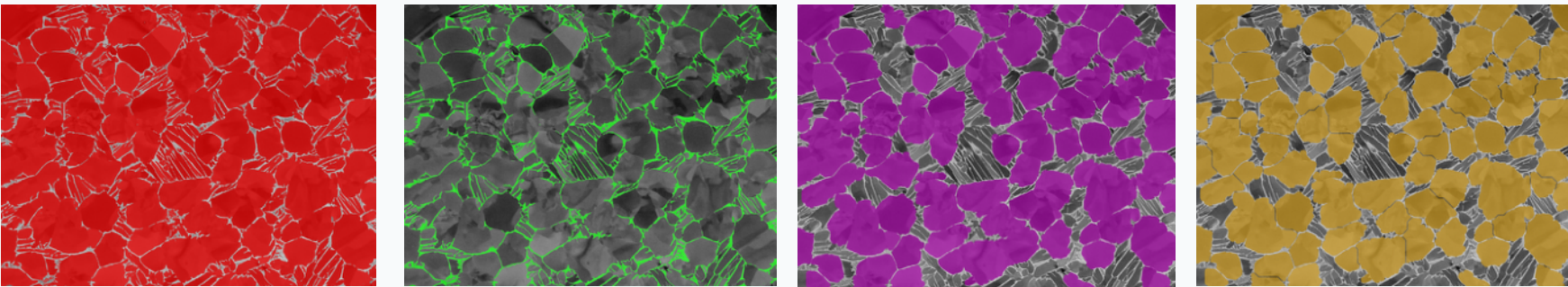
New settings added for more control

No Separation

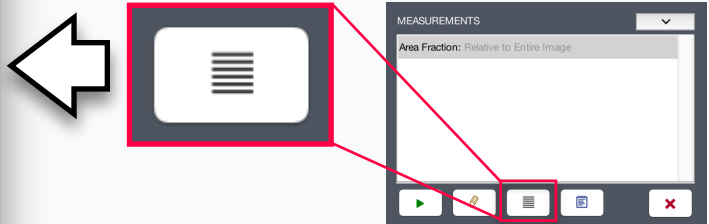
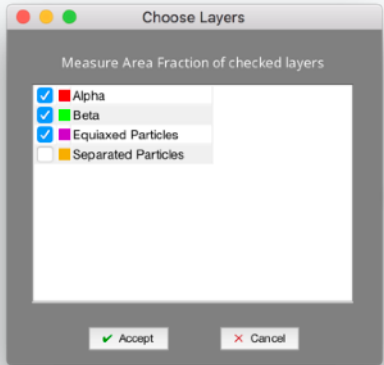
Separation with No Max Length

Separation with Max Length = 50

Targeted Global Measurements



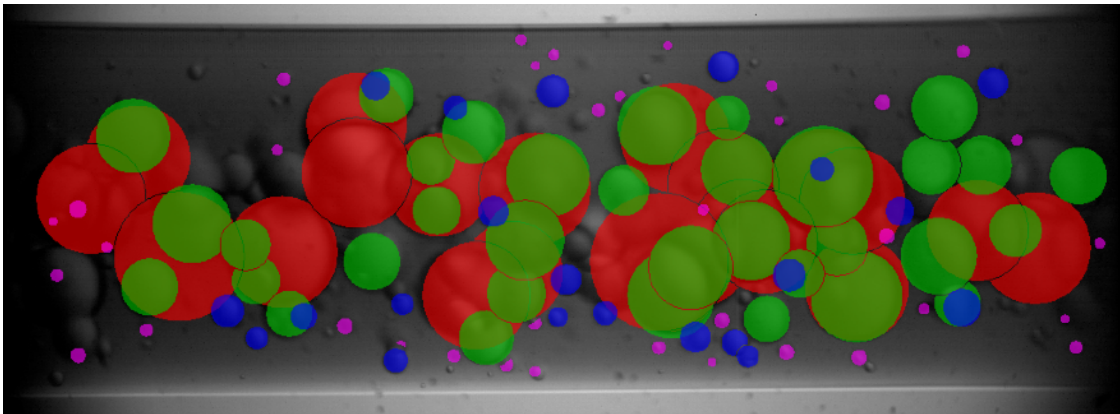
	Layer	Area Fraction (%)	Count	Perimeter (μm)
■	Alpha	89.1920		
■	Beta	10.8080		
■	Connected Particles	69.3640		
■	Separated Particles		82	1.5763e+03



Make Measurements on Just Some Layers

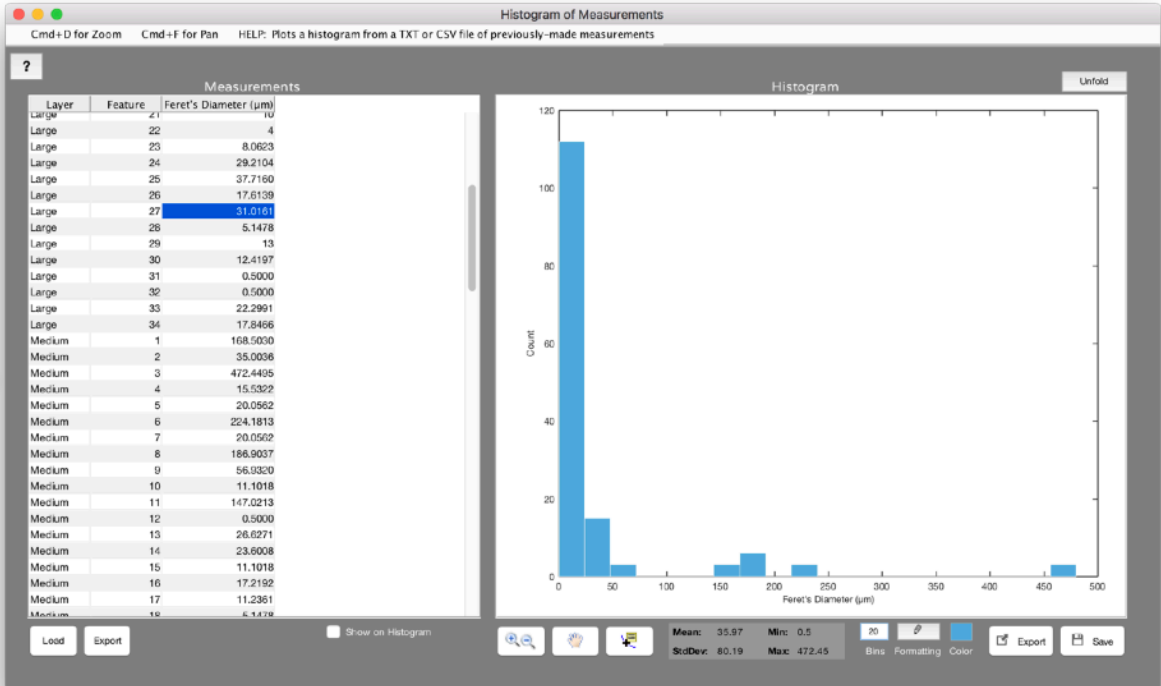
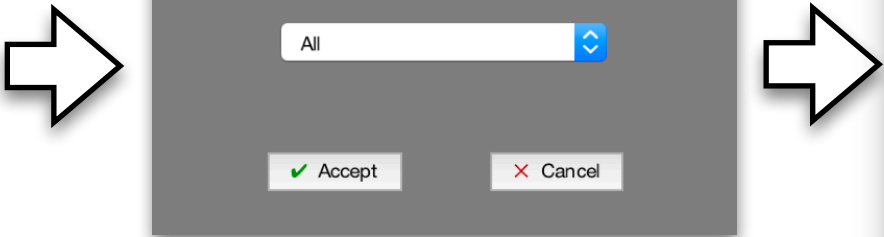
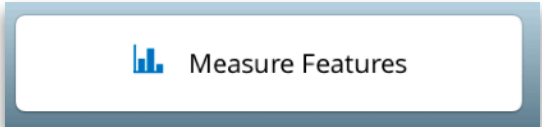
Now experience greater control over what you measure. Easily setup global measurements to run only on certain layers.

Feature Measurements on All Layers

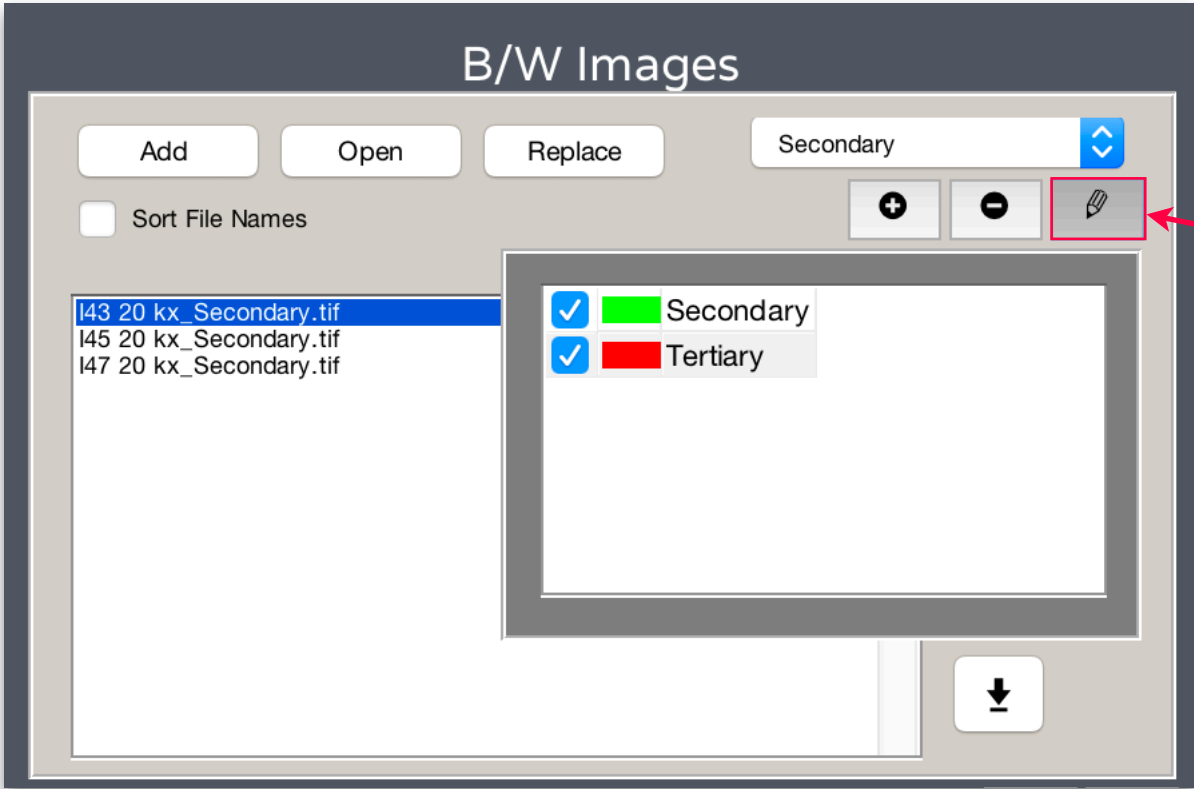


	Layer
■	Large
■	Medium
■	Small
■	Very Small

Perform Feature Measurements on all Layers at once. Especially useful for overlapping object problems with 10 or more Layers!



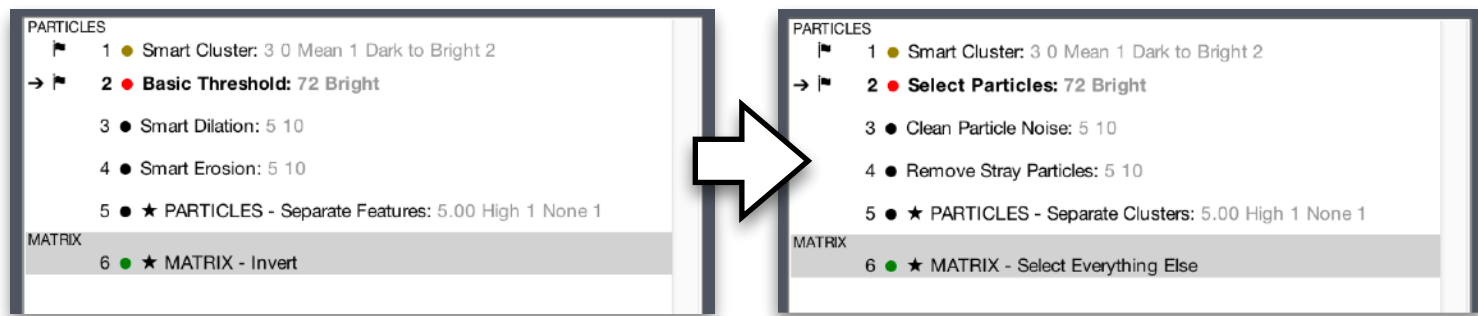
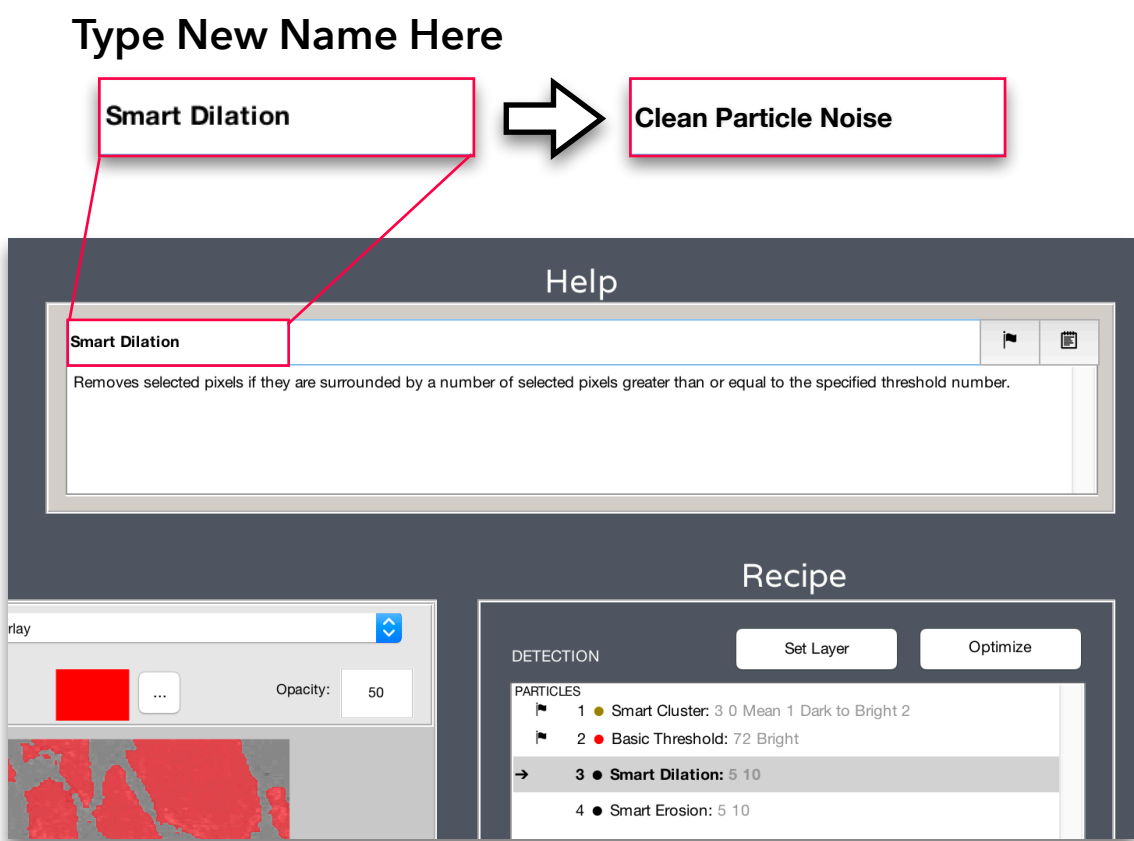
Better Layer Management



All-New Layer Editing

We've completely redone how you rename, change color, and toggle Layer visibility in the Post Processor.

Custom Step Names

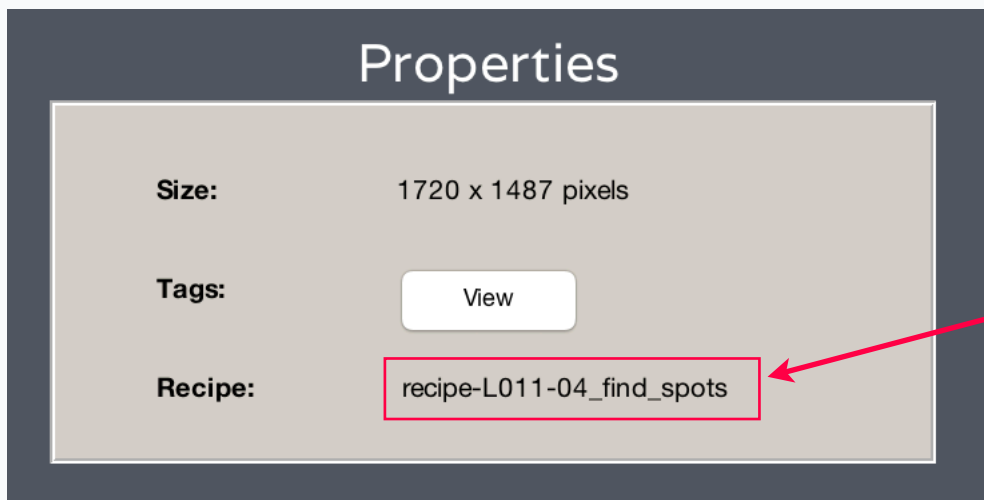


Default Names

Custom Names

Change Recipe step names to anything you like.

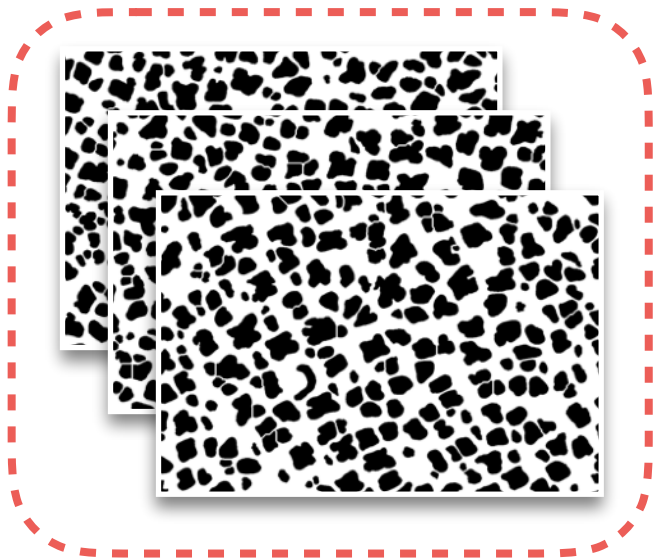
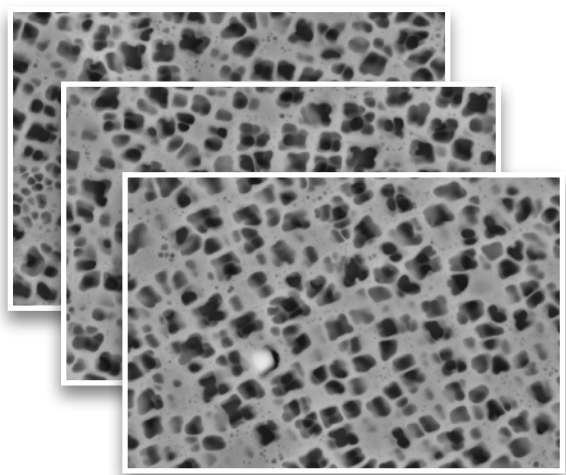
Recipe Name Shown



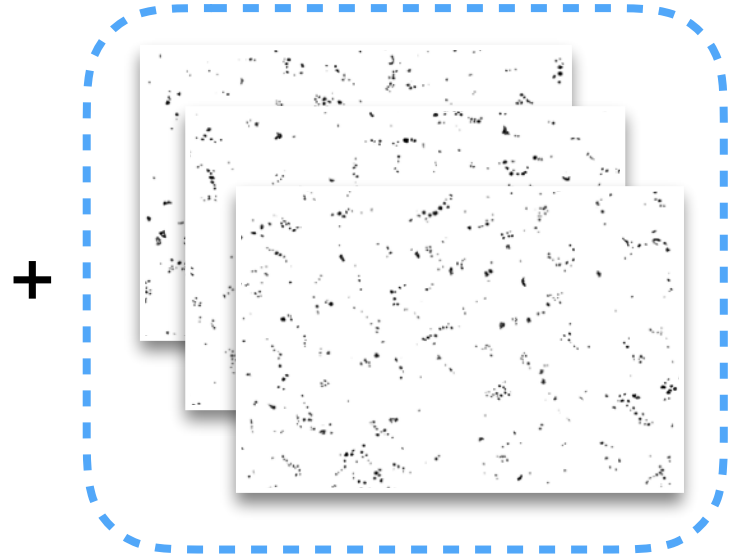
Recipe Name in Properties

Now always be sure which Recipe you have loaded

Better Batch Output



Secondary Folder

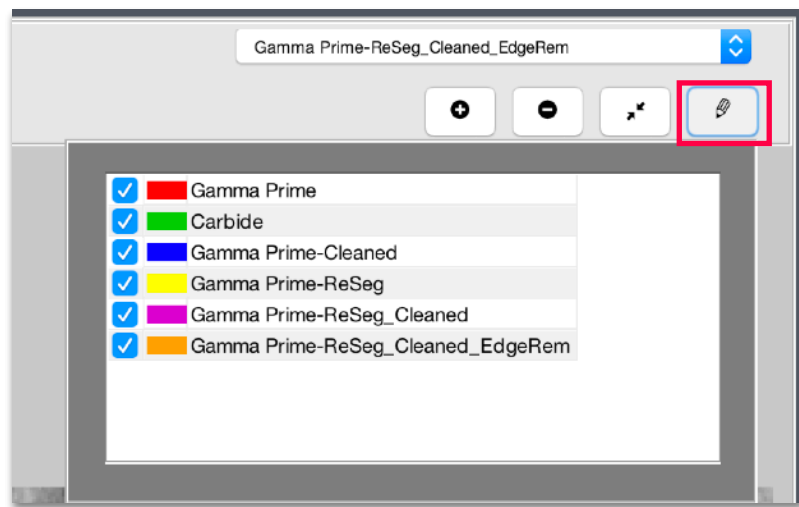


Tertiary Folder

Separate Folder for Each Layer

Each Layer's binary segmentations are now output into separate folders for easier Post Processor and 3D Toolbox management.

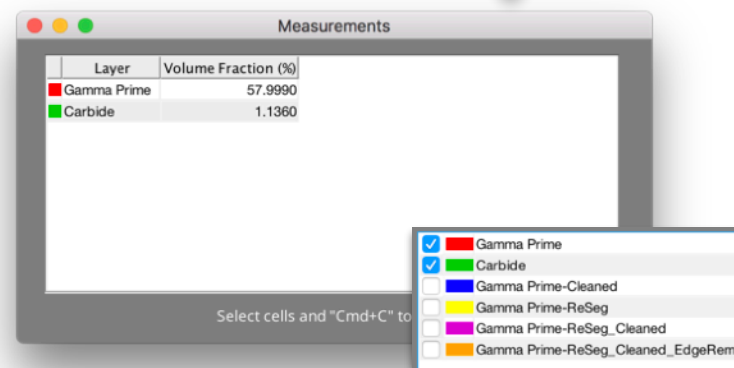
3D Toolbox Enhancements



Better Layer Management

We've brought the same revamped Layer management from the Post Processor to the 3D Toolbox. Now show/hide 3D Layers, and experience streamlined recoloring and renaming.

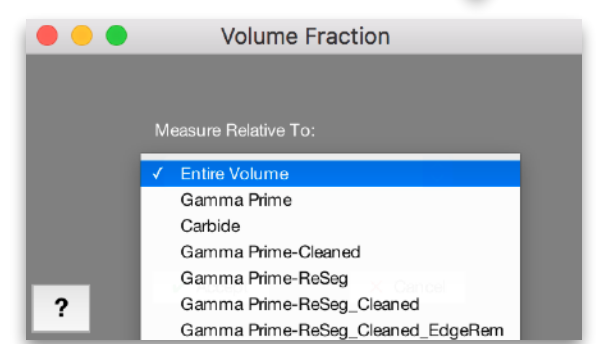
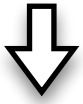
Measurements → Volume Fraction



Measure Multiple Layers

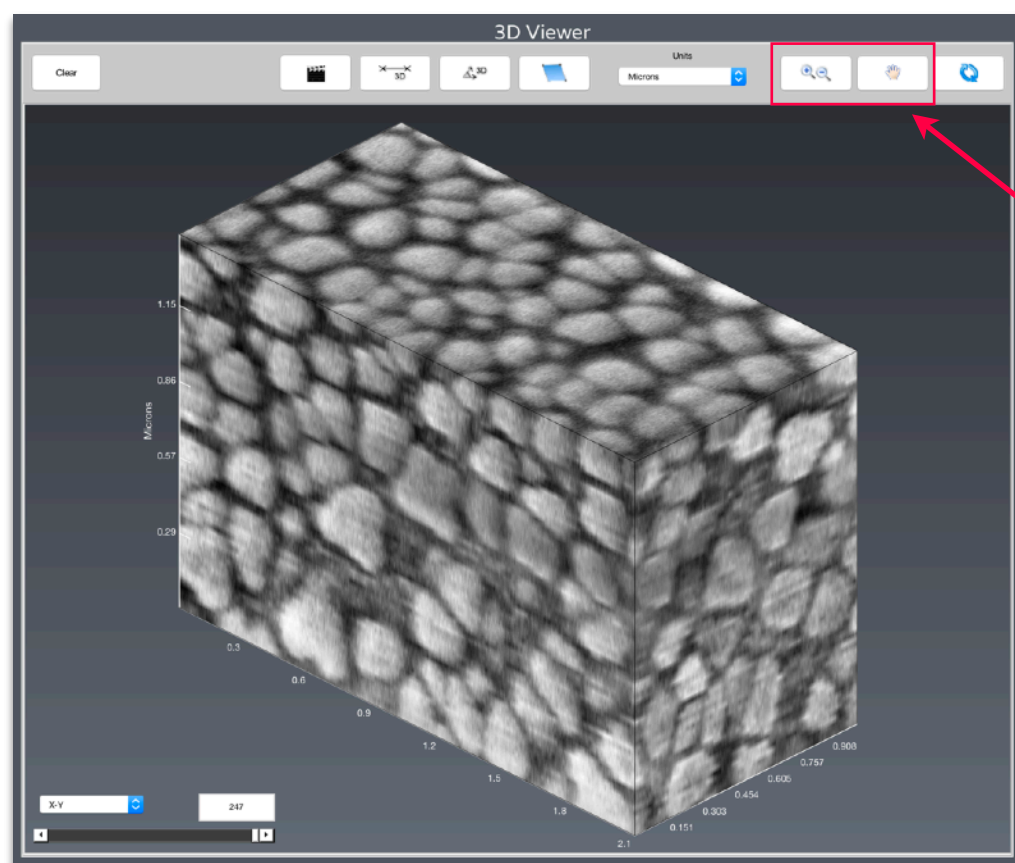
When in "Layers View", Global Measurements now execute on all shown Layers.

Measurements → Volume Fraction



"Relative To" Measures

Measure things like Volume Fraction and Number Density relative to a non-rectangular sub-volume, just like in 2D.



Convenient 3D Zoom and Pan

New Zoom and Pan tools now accompany the 3D Rotate tool for better ergonomics when exploring your visualizations.

Bug Fixes and Other Changes

- Over 30 fixes and improvements
- *Number of Features* has been renamed to *Count* throughout all apps
- New functions Clean-Up > Replace With > Major Axis and Minor Axis
- New function Morphology > Extend Features grows features along local orientations