



MIPAR™

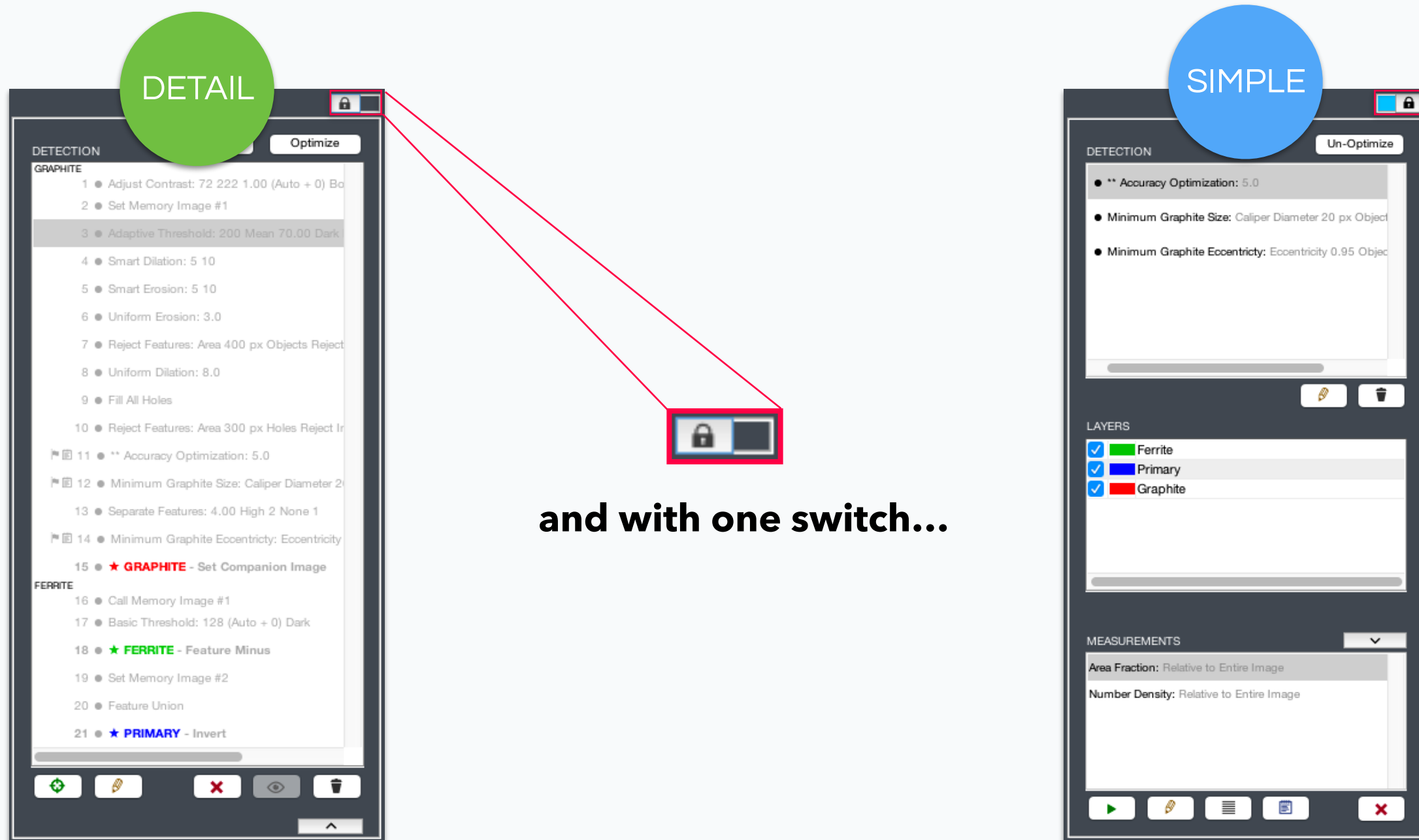
Release Notes

2.0.0

Simple Recipe Mode

[Learn More »](#)

Our Biggest Change Yet.



Take your Powerful Recipe

Detail Mode...

- ✓ Make infinite customizations
- ✓ Show all Recipe steps
- ✓ Set new Layers

Make it Powerfully Simple

Simple Mode...

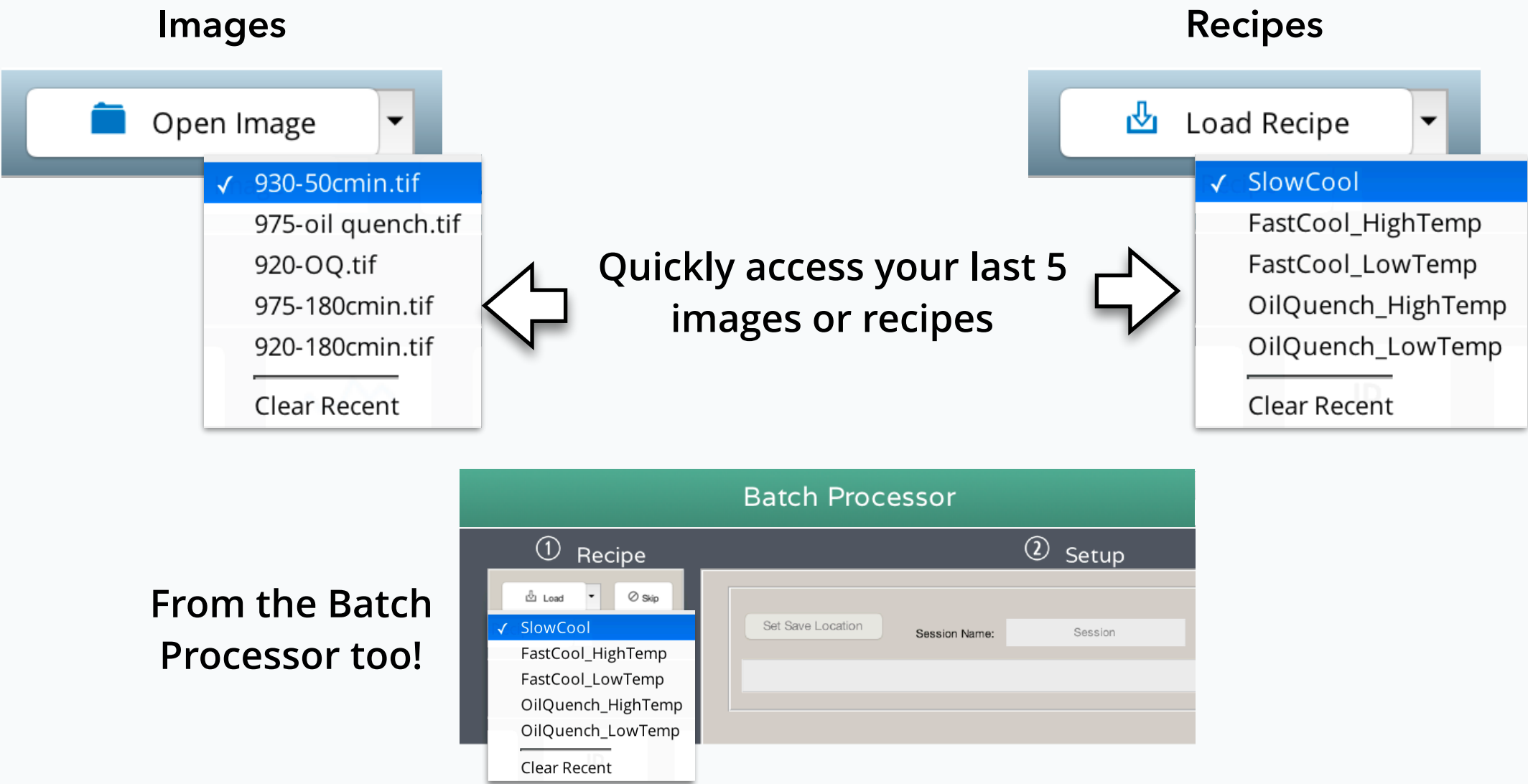
- ✓ Friendly use and quick adjustment
- ✓ Only flagged steps shown
- ✓ Layers in their own table



With an Upgraded Core, You Will Experience...

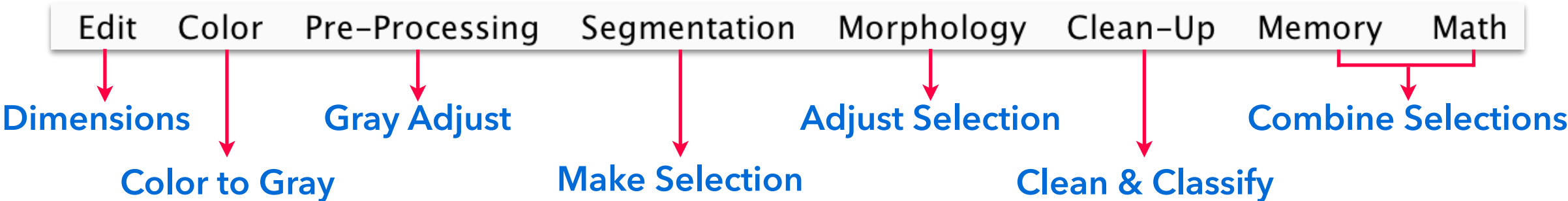
- Faster opening** and displaying of images across the board.
- More performance** when running Recipes and measurements.
- Full GPU support** for the latest NVIDIA Volta architecture and CUDA 9.0.

Open and Load Recent

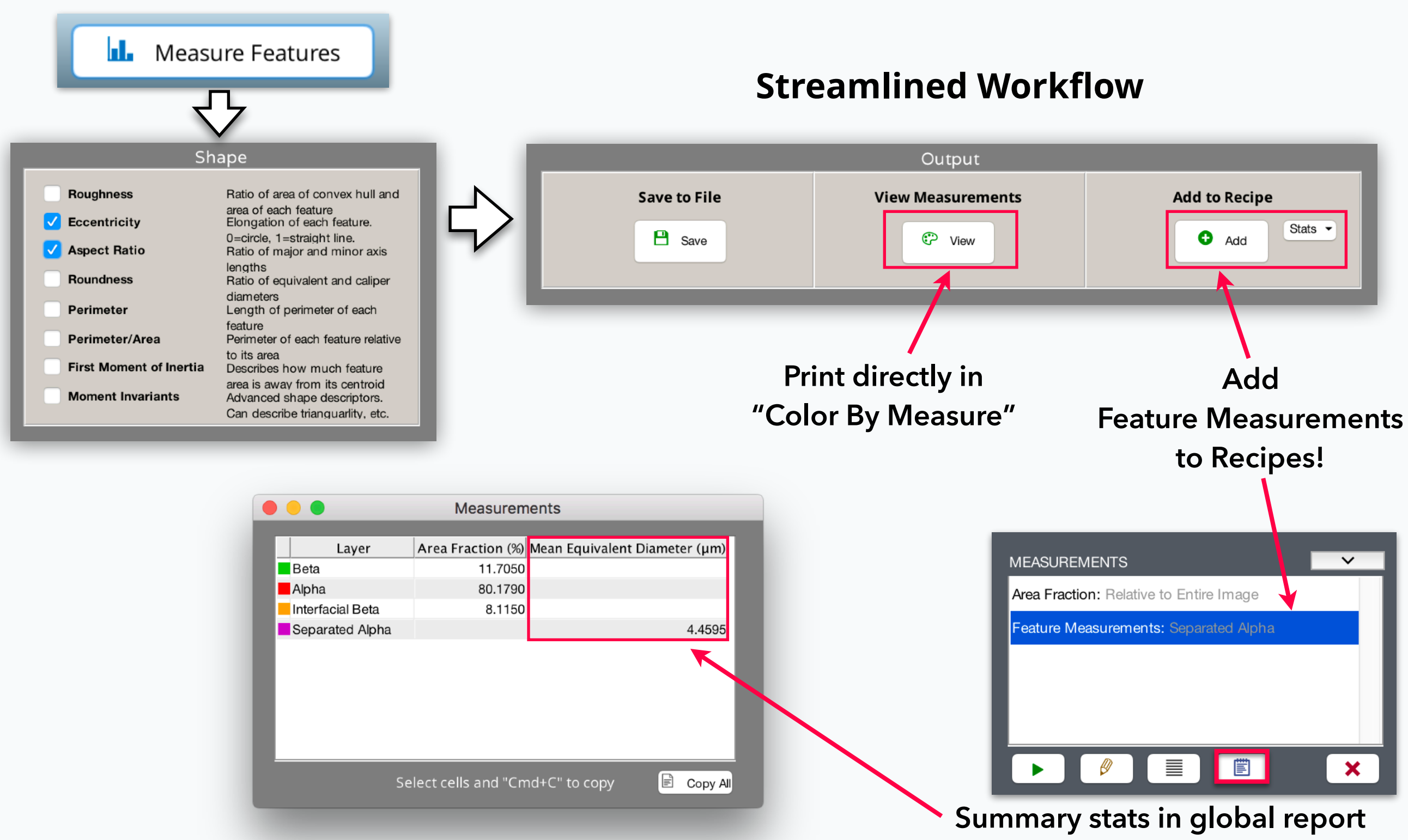


Cleaner Menus

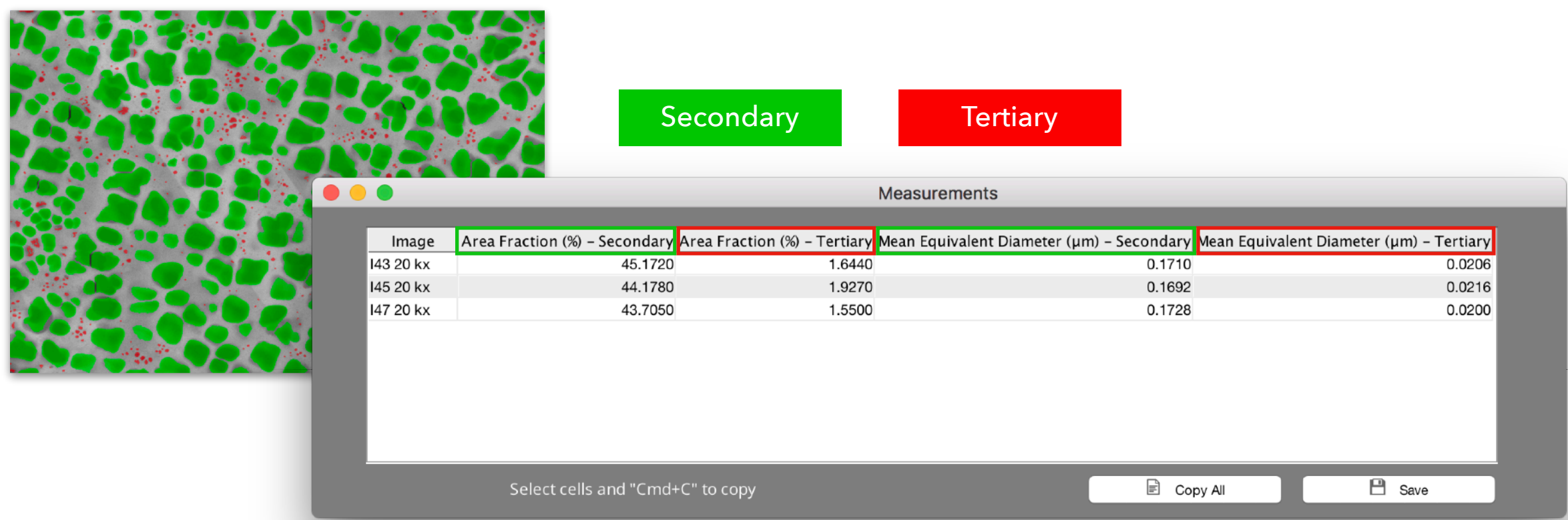
Image Processor functions have been carefully re-positioned for consistent organization



Feature Measurements Redone



Better Bulk Reporting



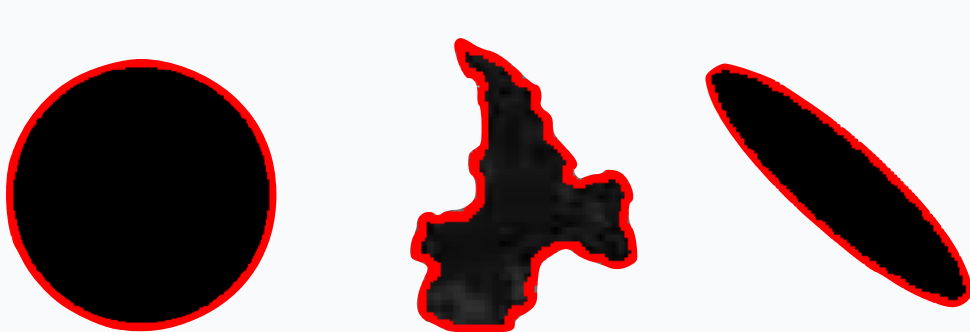
Bulk global measurement and feature summary stats now together in one report!

All images, all measurements, one sheet.
Batch Processor and **Post Processor**.

New Measurements

Roundness

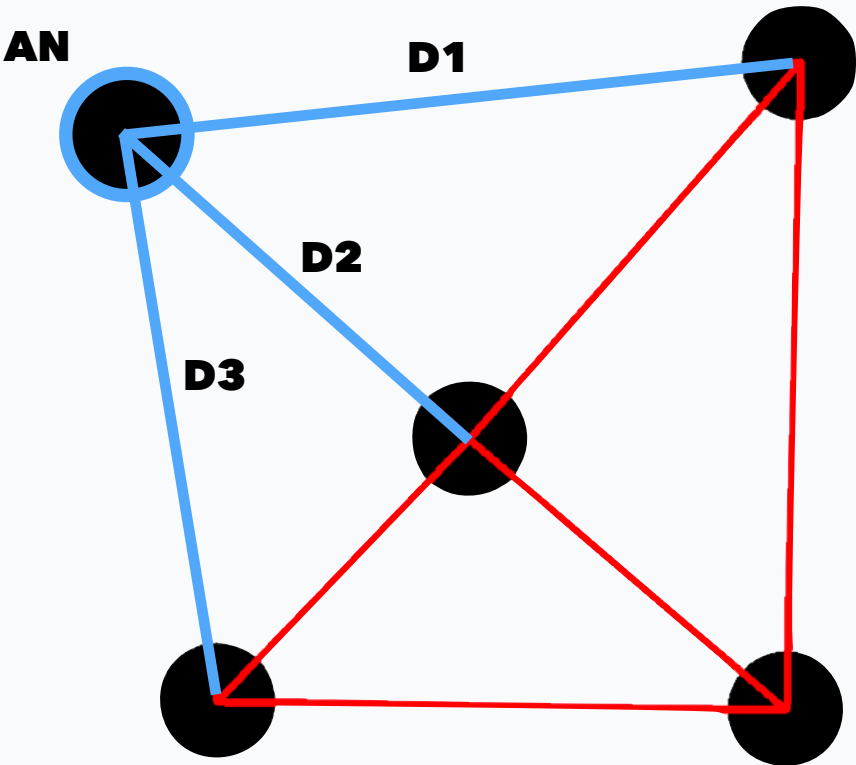
Equivalent Diameter / Caliper Diameter



ROUNDNESS	HIGH	LOW	LOW
ECCENTRICITY	LOW	LOW	HIGH
ROUGHNESS	LOW	HIGH	LOW

Average Neighbor Distance

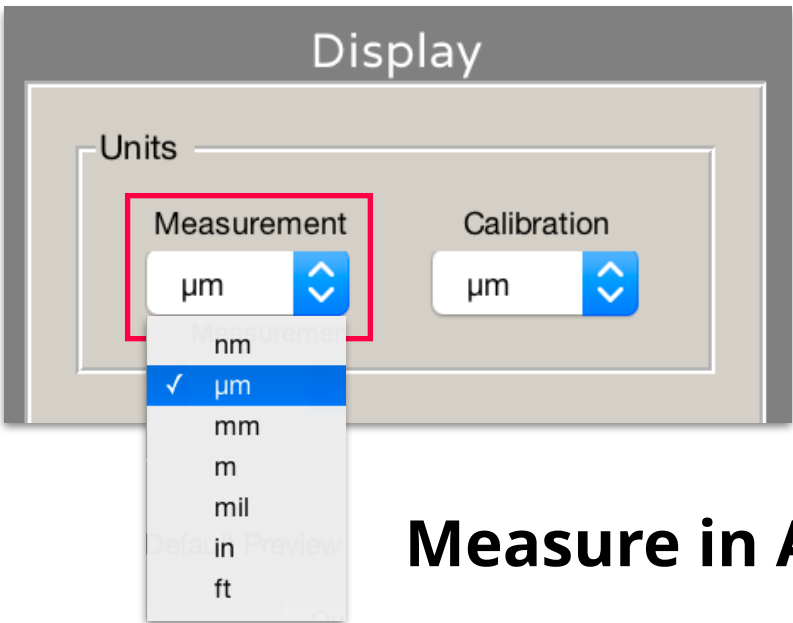
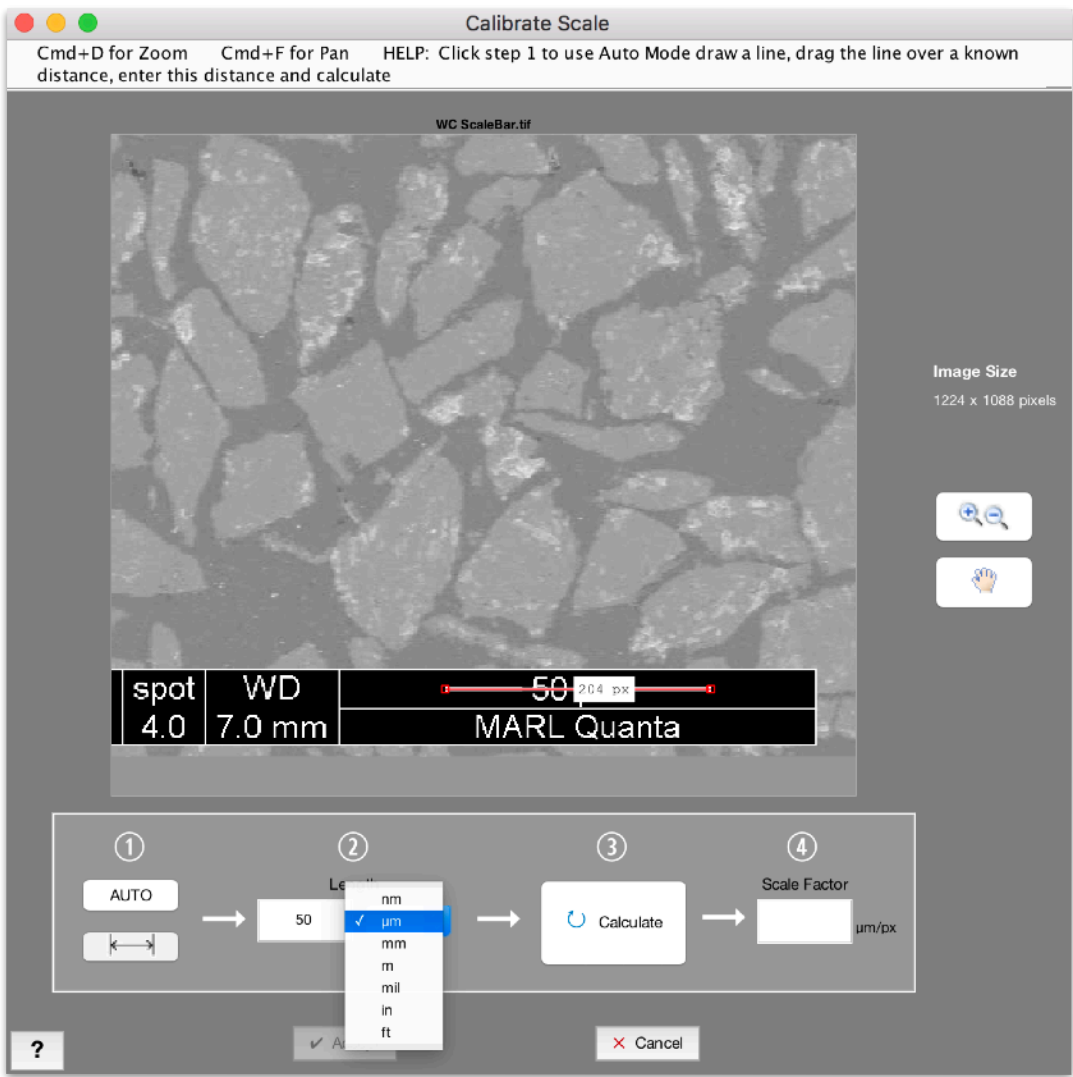
Average distance to all triangulated neighbors
 $AN = (D1+D2+D3)/3$



Support for All Units

Calibrate in Any Units

Easily set your scale factor based on the units of your scale bar



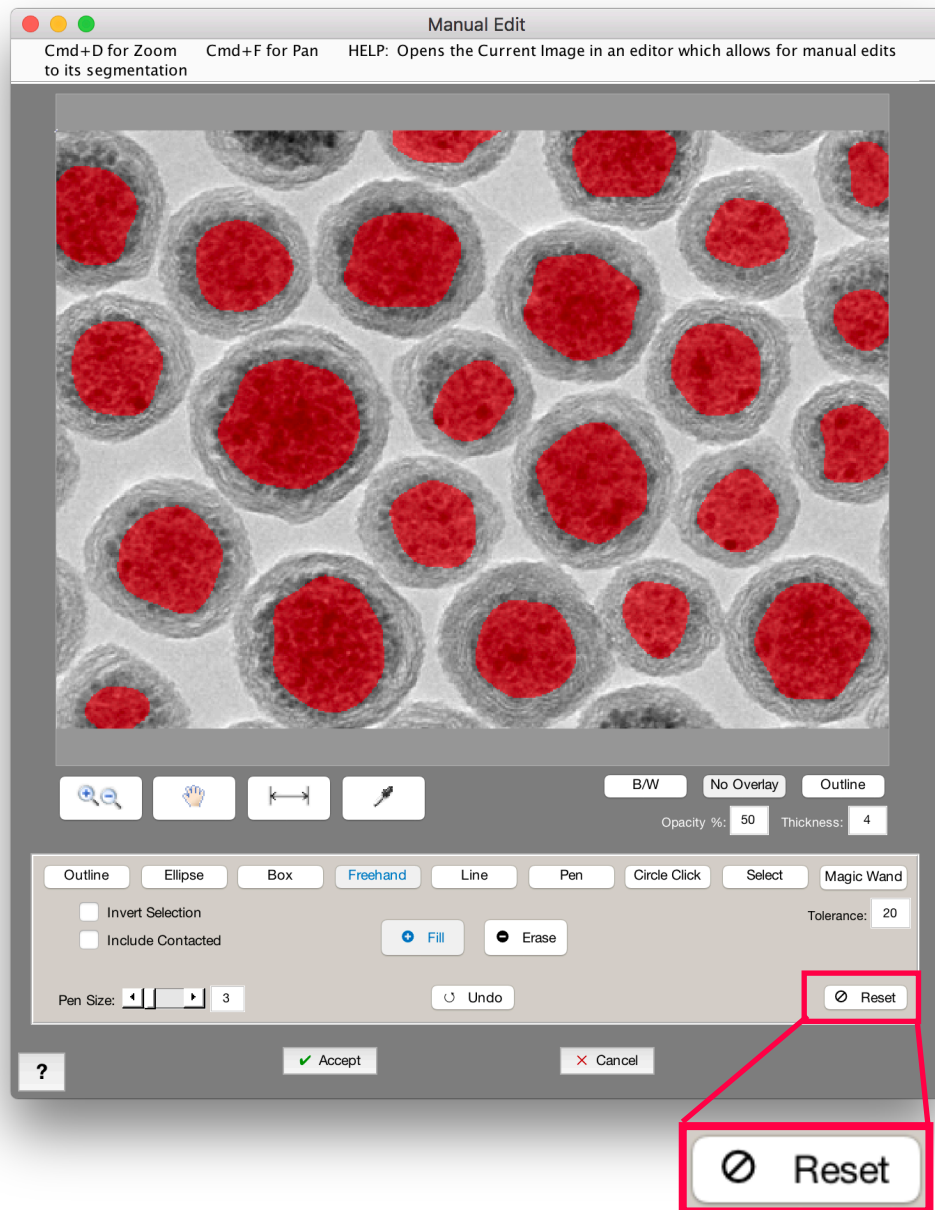
Measure in Any Units

Now set MIPAR measurement units from File > Preferences in any app!

Manual Edit Enhancements

Reset Manual Edit

Completely clear all edits from a *Manual Edit* step without removing it from a Recipe.



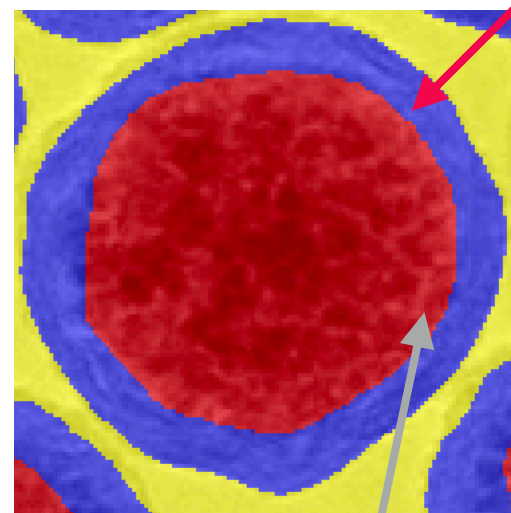
Erase in Other Layers



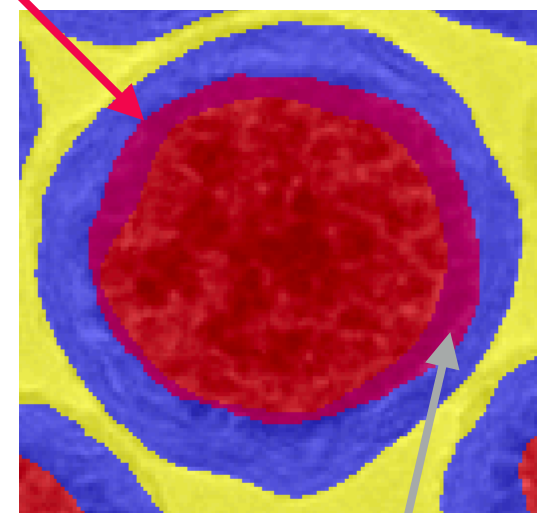
Now when adding to a Layer in Post Processor, you can simultaneously erase pixels from all other Layers .

Extremely useful for editing multi-Layer segmentations!

After Manually Adding Red Core



"Erase Other" Checked
No Overlap



"Erase Other" Not Checked
Overlap of Red and Blue

Bug Fixes and Other Changes

- Over 100 fixes and improvements
- *Feret's Diameter* has been renamed to *Caliper Diameter* throughout all apps
- "Choose Layers" in Image Processor now opens a checkbox matrix for all measurements
- New function Clean-Up > Replace With > Triangulation displays triangulation network between all feature centroids
- New function Clean-Up > Replace With > Fit Circle fits best circles to feature perimeters. Useful for completing obscured particles prior to measurement.