

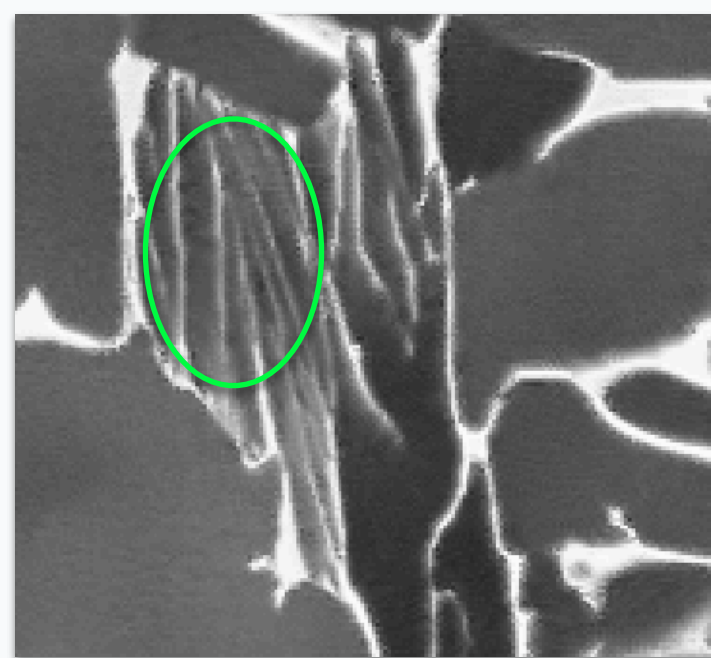
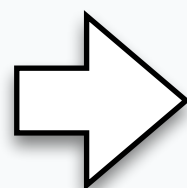
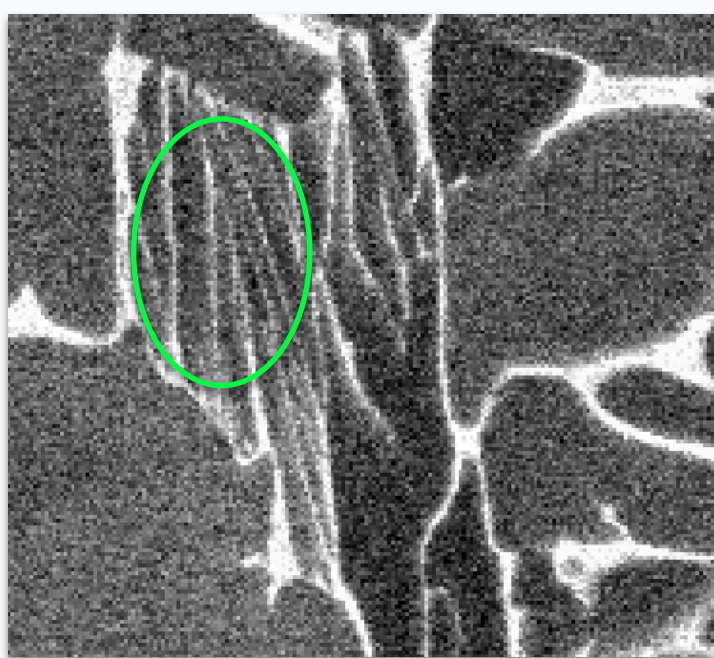


MIPAR™

Release Notes

2.1.0

New Non-Local Means



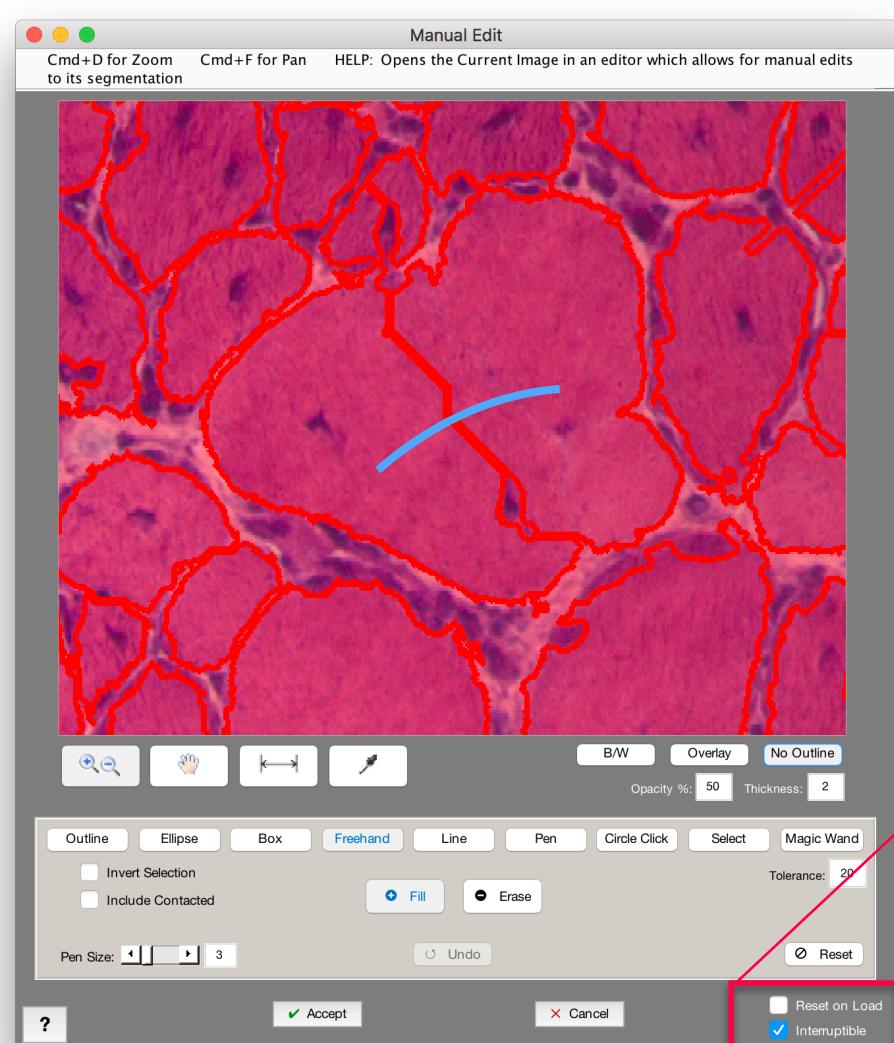
Up to 15x faster

Stunning performance near fine features

Interruptible Manual Edit

Manual Edit can now popup during Recipe loading, allowing user-interaction like crossing out unwanted boundaries.

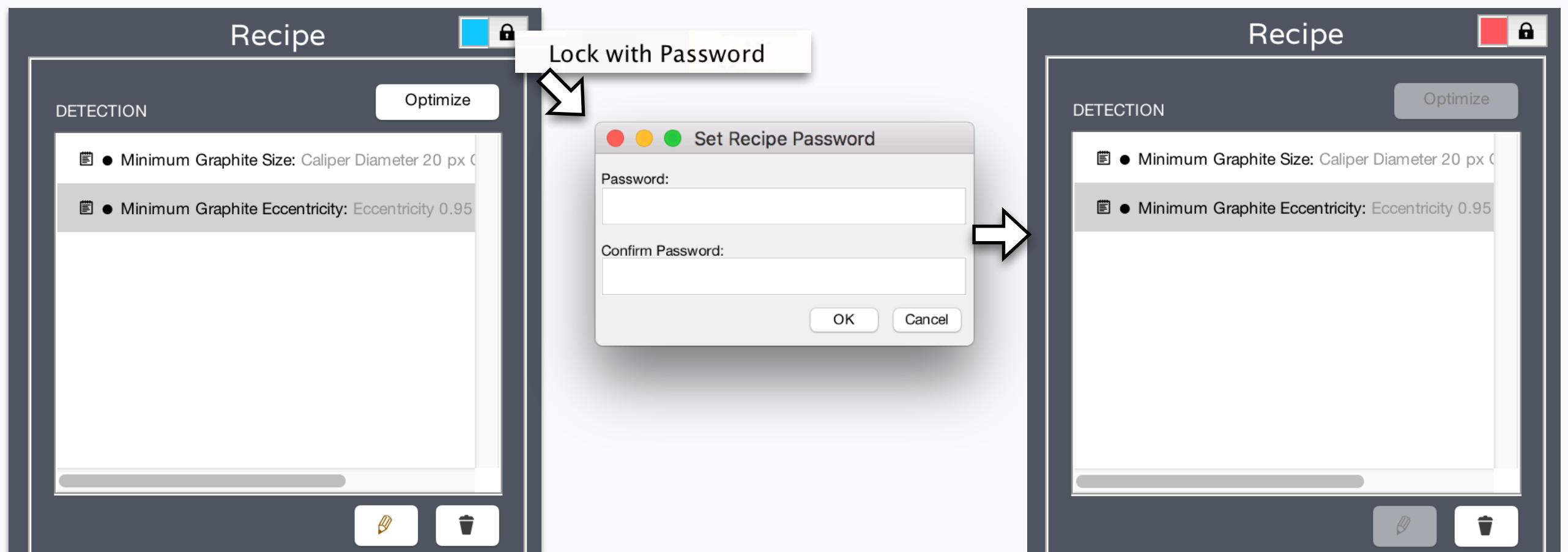
Even during a batch!



☐ Reset on Load
☒ Interruptible

Check "Reset on Load" to clear saved edits upon Recipe load

Recipe Password Lock



Lock in Simple Recipe

Guarantee consistent operation in production environment

Comply with QC audit requirements

Share Recipes, but protect underlying IP if needed

Bug Fixes and Other Changes

- Over 50 fixes and improvements
- New *Non-Local Means* may produce slightly different results than previous function. It is recommended that you re-test Recipes which use it.
- Accelerated image display across all apps
- Accelerated Simple Mode switching
- *Color by Measure* performance improved
- “Orientation” in *Local Measure* now only computes and displays in selection
- Histogram limits improved in all tools
- Removed confirmation message after saving Recipes
- New keyboard shortcuts in *3D Manual Edit*: **z** = Fill **x** = Erase **space** = Last Tool
- Easier activation: Fingerprints can now be taken directly from Activation Window