

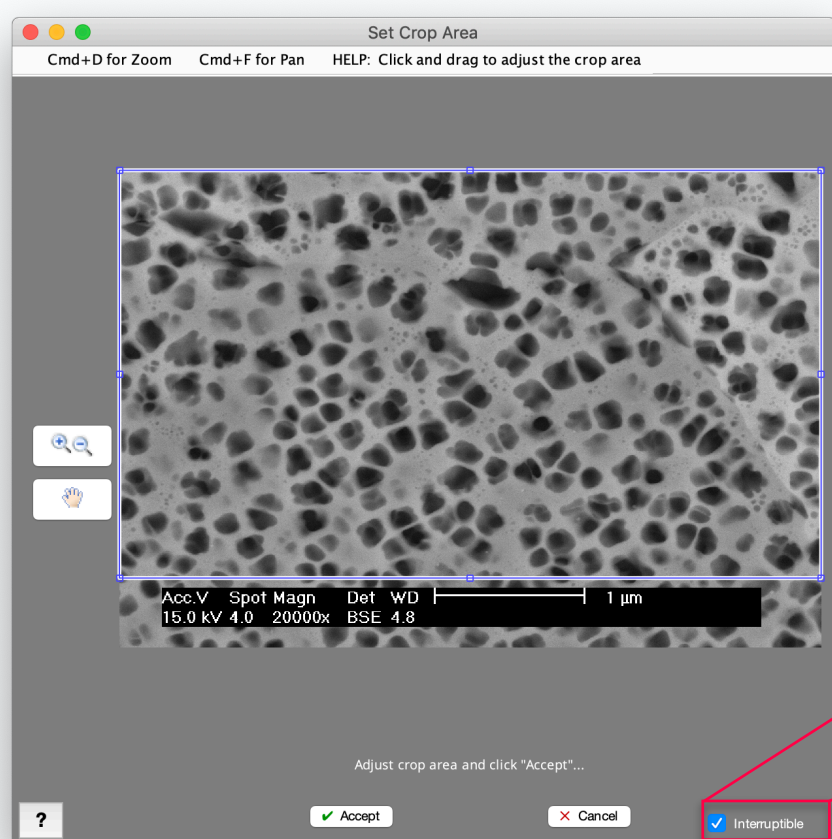


MIPAR™

Release Notes

2.1.6

Interruptible Crop



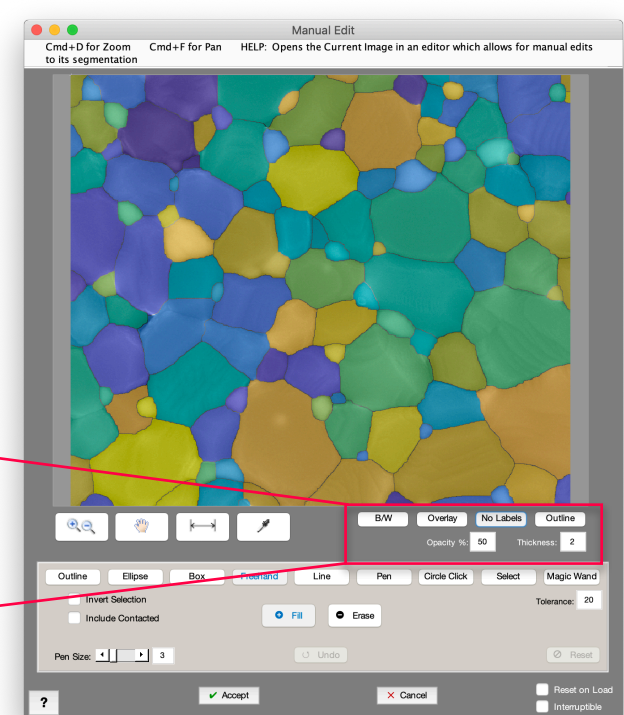
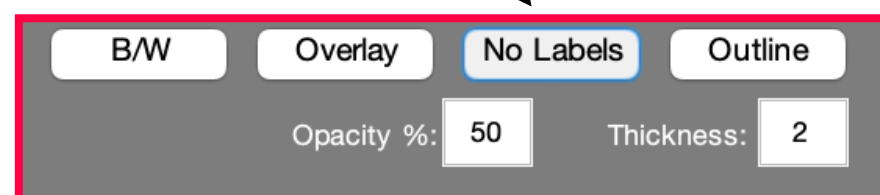
Crop Image can now popup during Recipe loading, allowing user-interaction like moving and resizing the area of interest.

Even during a batch!

☒ Interruptible

Labels View in Manual Edit

Now use Labels View right inside *Manual Edit* and clearly see what MIPAR thinks are separate features.



Bug Fixes and Other Changes

- Several bug fixes and improvements
- Fixed bug with batch saving images in Labels View from Post Processor
- *Manual Edit* now also remembers your last opacity and thickness settings