



MIPAR™

Release Notes

2.2.0

Custom Binning



Now define your own bin ranges for histogram analysis just the way you want

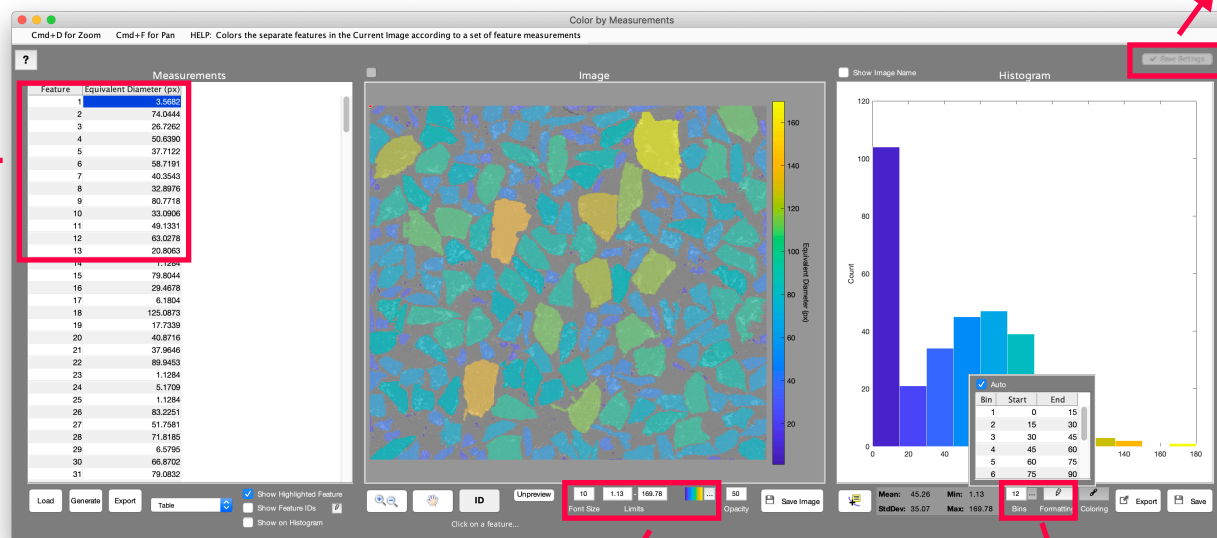
Available in *Color by Measurements* and *Histogram of Measurements*

Saved Feature Measurement Settings

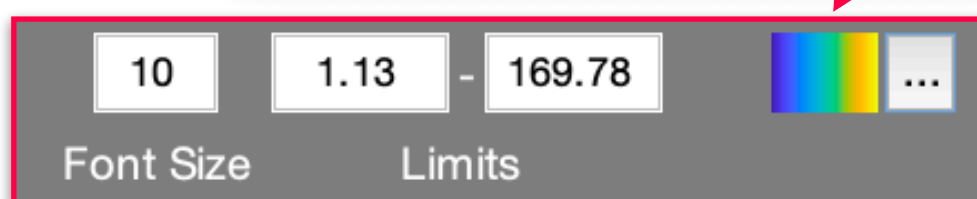
Key formatting settings now saved into the recipe for instant recall

Selected column

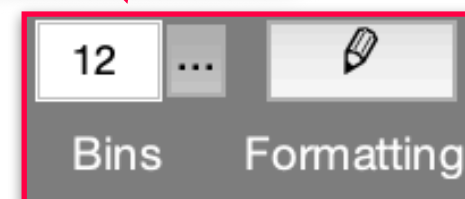
Feature	Equivalent Diameter (px)
1	3.5682
2	74.0444
3	26.7262
4	50.6390
5	37.7122
6	58.7191
7	40.3543
8	32.8976
9	80.7718
10	33.0906
11	49.1331
12	63.0278
13	20.8063



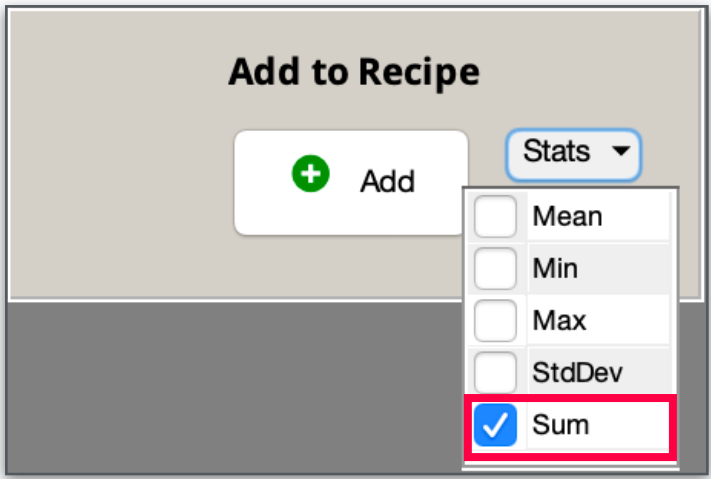
Color image settings



Histogram settings



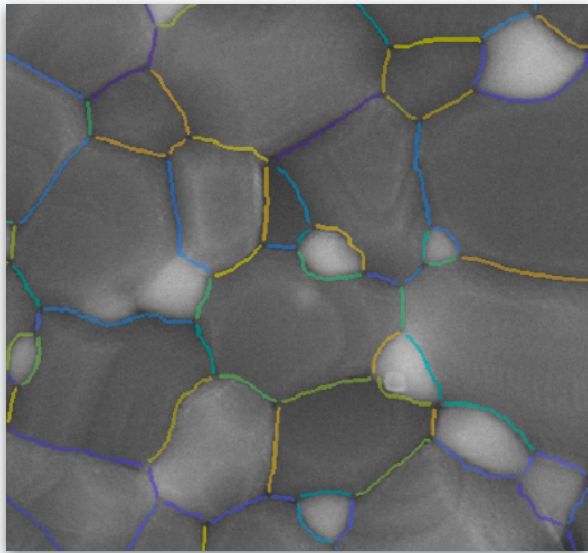
Sum of Feature Measurements



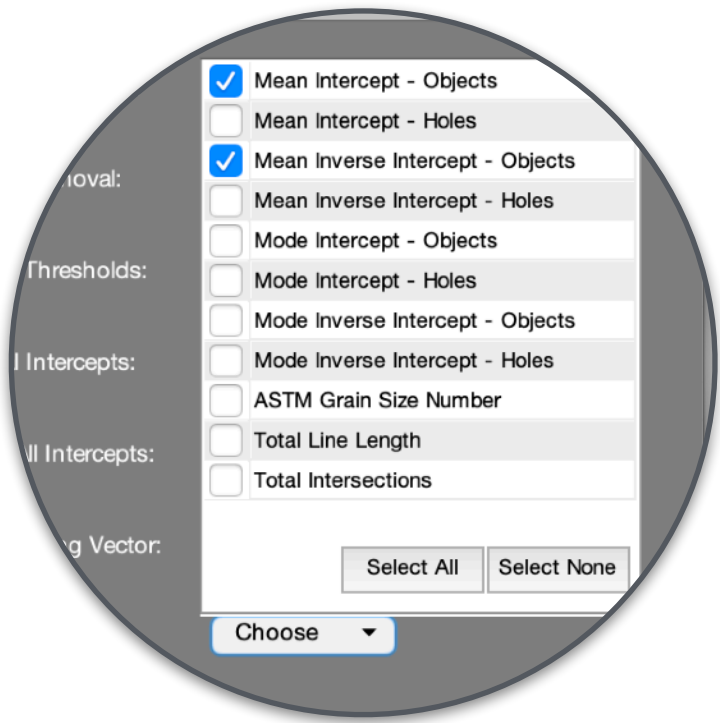
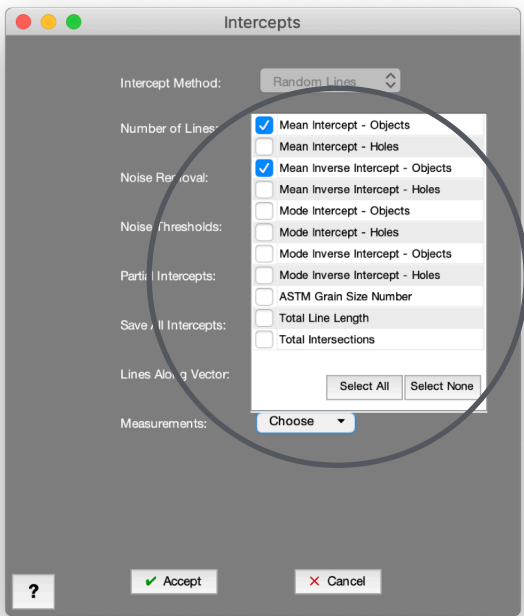
Add “Sum” as a feature measurement summary stat to the global report

Example: Total grain boundary length

Layer	Sum Caliper Diameter (mm)
Boundaries	7.5413



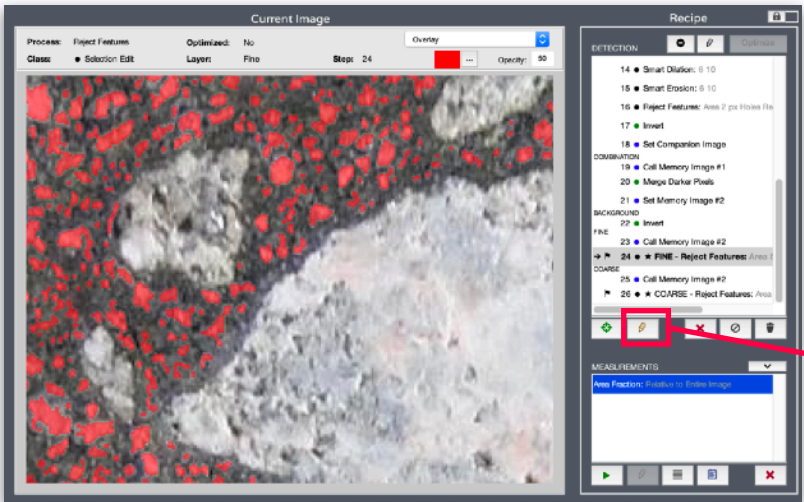
Specify Intercepts Measurements



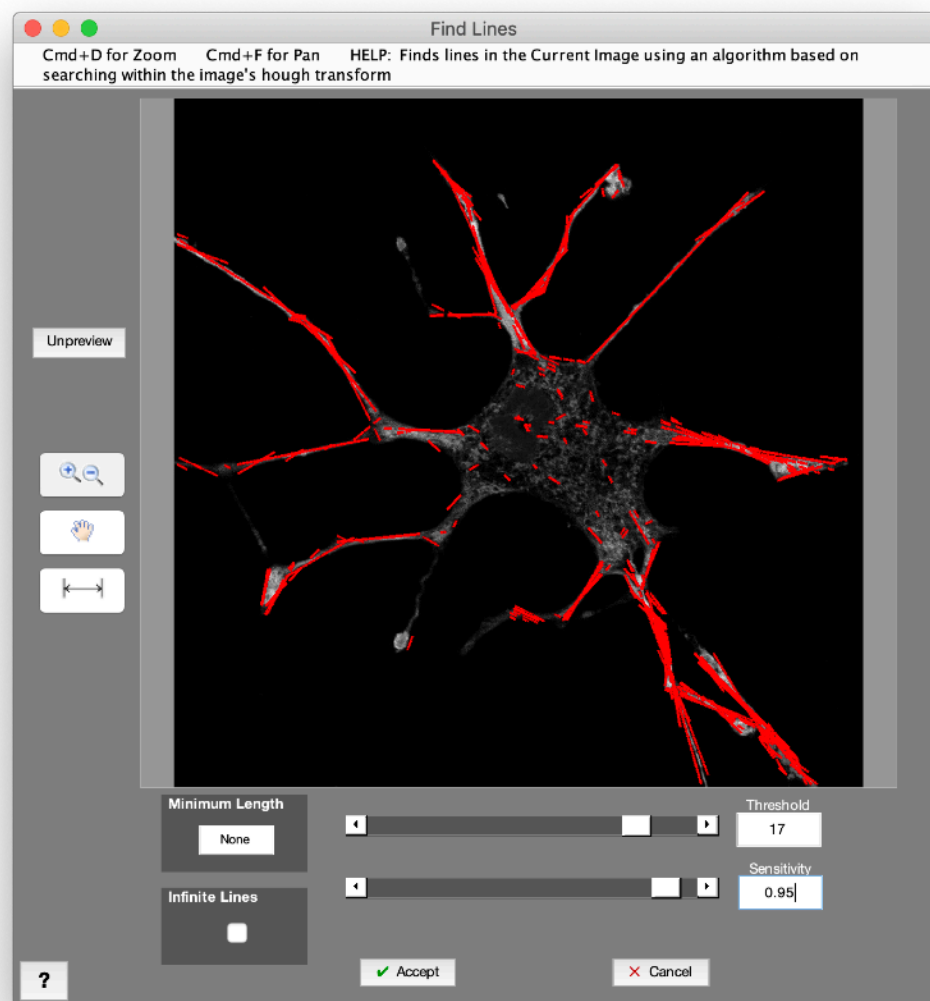
Choose to report all or some of *Intercepts'* available measurements

Initial Preview Zoom

Preview windows now load with Current Image viewing area, so you can get right to editing



Find Lines



New function for detecting linear features

Examples:

- Detect branching features
- Find and correct linear artifacts
- Identify and remove scratches

More Gray Math Flexibility



Make Grayscale

New function to convert a Selection Image to grayscale

Allows any grayscale filter to be applied to binary selection



Add Value

New function to add a constant value to any grayscale image

Facilitates some highly customized, code-free algorithm development

Bug Fixes and Other Changes

- Several bug fixes and improvements
- Drag and drop Post Processor session files to open
- Scale factor auto adjusts when calculated from “Opened image” if *Resize Image* step present
- Password-locked Recipes now also lock measurement settings